



# Warhawks Men's Basketball

University of Louisiana at Monroe



ULM (8-14, 5-9 SBC)

# WARHAWKS

Vs.

## South Alabama

# JAGUARS

(9-18, 3-11 SBC)



Game 23

**Thursday, Feb. 27, 2014 • 7:00 p.m.**  
**Fant-Ewing Coliseum (7,000) • Monroe, La.**

**Radio: - KLIP LA 105.3 FM, Nick White (PXP)**  
**Twitter: @ULM\_MBB**

### ULM Quick Notes

- The Warhawks return home where they are 5-5 this season and 389-168 all-time at Fant-Ewing Coliseum. Keith Richard is 5-5 in his head coaching career against USA
- In the first meeting against USA on Jan. 18, ULM came out with a 64-58 road victory. The seven-point halftime deficit against was the largest ULM has overcome this season in a win. Junior Tylor Ongwae led the team with 19 points and was one of four double-digit scorers
- Last weekend, freshman Nick Coppola and junior Chinedu Amajoyi posted career-games against Georgia State. Coppola netted 16 points while Amajoyi put in 11. Coppola has played seven 40-minute games this season and tied the school record of five in-a-row set in 1999-2000 by Maurice Bell
- Ongwae ranks second in the league in SBC games in scoring with 19.4 ppg. He has tallied 14 consecutive double-figure scoring games, reaching that mark in every SBC contest. Ongwae has recorded double-digits in 20 of 22 games on the season. He scores 16.9 ppg on the season
- Senior Jayon James leads the team in both rebounds (6.3 rpg) and assists (4.5 apg) and also scores 9.9 ppg on the year. He has led the team in assists in 15 games this season. James has posted at least 10 points, five rebounds and five assists eight times this season. His 5.0 apg in conference games ranks second in the league
- Amajoyi leads the conference in three-point field goal percentage at .522 (12-for-23). He has started in ULM's last seven games and has doubled his scoring average in that span
- In ULM's last home game, it posted a 65-49 victory over UALR. The 49 points was the fewest ULM has ever let up and the 16-point was the largest ever in 23 meetings between the two schools. The Warhawks dominated in the paint, 30-14. It was ULM's largest win over an SBC opponent since Feb. 22, 2007 when it defeated Denver 87-51
- The ULM defense shut down the Trojans, allowing just 13 points in the first half - the fewest ULM has let up in a half this season. The Warhawks recorded a season-high 12 steals and 12 blocks
- The Warhawks are 4-0 this season when scoring at least 80 points, 7-0 when it has at least four double-figure scorers, 6-1 when scoring at least 20 points off the bench and 6-1 when tied or leading at halftime

### ULM MEN'S BASKETBALL SCHEDULE

|                      |                        |                        |
|----------------------|------------------------|------------------------|
| Fri., Nov. 8         | at No. 5 Kansas        | L, 80-63               |
| <b>Mon., Nov. 18</b> | <b>Samford</b>         | <b>W, 86-52</b>        |
| Thu., Nov. 21        | at Northwestern St.    | W, 84-80 (OT)          |
| <b>Mon., Dec. 9</b>  | <b>Thomas</b>          | <b>W, 84-61</b>        |
| Sat., Dec. 14        | at LSU                 | L, 61-54               |
| Wed., Dec. 18        | at Ole Miss            | L, 75-62               |
| <b>Sun., Dec. 22</b> | <b>Louisiana Tech</b>  | <b>L, 83-61</b>        |
| Fri., Dec. 27        | at No. 3 Ohio State    | L, 71-31               |
| <b>Sat., Jan. 4</b>  | <b>UL-Lafayette*</b>   | <b>W, 103-98 (20T)</b> |
| Thurs., Jan. 9       | at UT Arlington*       | L, 83-79 (OT)          |
| <b>Sat., Jan. 11</b> | <b>Texas State*</b>    | <b>L, 61-36</b>        |
| Thu., Jan. 16        | at Troy*               | W, 75-64               |
| Sat., Jan. 18        | at South Alabama*      | W, 64-58               |
| <b>Thu., Jan. 23</b> | <b>WKU*</b>            | <b>L, 69-51</b>        |
| <b>Sat., Jan. 25</b> | <b>Georgia State*</b>  | <b>L, 66-58</b>        |
| <b>Thu., Jan. 30</b> | <b>Arkansas State*</b> | <b>W, 72-65</b>        |
| Sat., Feb. 1         | at UL-Lafayette*       | L, 66-50               |
| Thu., Feb. 6         | at Texas State*        | L, 65-57               |
| <b>Thu., Feb. 13</b> | <b>UT Arlington*</b>   | <b>L, 85-74</b>        |
| <b>Sat., Feb. 15</b> | <b>UALR*</b>           | <b>W, 65-49</b>        |
| Thu., Feb. 20        | at Georgia State*      | L, 75-60               |
| Sat., Feb. 22        | at WKU*                | L, 72-63               |
| <b>Thu., Feb. 27</b> | <b>South Alabama*</b>  | <b>7:00 p.m.</b>       |
| <b>Sat., Mar. 1</b>  | <b>Troy*</b>           | <b>4:00 p.m.</b>       |
| Thu., Mar. 6         | at Arkansas State*     | 7:05 p.m.              |
| Sat., Mar. 8         | at UALR*               | 7:00 p.m.              |
| Thurs., Mar. 13      | Sun Belt Championships | TBA                    |

All times Central and subject to change. Bold indicates home contests.; \*-Sun Belt game

**We are ULM.** Please note that there are only two correct versions of our institution's name, the preferred acronym ULM and the full name, the University of Louisiana at Monroe. Any other reference, including Louisiana-Monroe, UL-Monroe, La.-Monroe, LAM, or simply Monroe, are incorrect.

### Media Relations Contacts

|                             |                           |
|-----------------------------|---------------------------|
| Robbie Kleinmuntz (Primary) | Tom Ritter (Secondary)    |
| Assistant Director          | Graduate Assistant        |
| kleinmuntz@ulm.edu          | rittertf@warhawks.ulm.edu |
| O: 318-342-5462             | O: 318-342-5451           |
| C: 847-912-5380             | C: 318-953-0734           |



# Warhawks Men's Basketball

University of Louisiana at Monroe



## Keith Richard

Head Coach

Fourth Year at ULM  
13th Season Overall

Alma Mater: ULM (1982)

### THE RICHARD FILE

#### COACHING HONORS

- 1999 Sun Belt Coach of the Year
- Has been part of the coaching staff for seven NCAA Tournament and three NIT teams

#### COACHING CAREER

| Season  | School   | Position             | Record     |
|---------|----------|----------------------|------------|
| 1984-85 | ULM      | Graduate Assistant   | 17-12      |
| 1985-86 | ULM      | Graduate Assistant   | 20-10/NCAA |
| 1986-87 | Marshall | Assistant Coach      | 25-6/NCAA  |
| 1987-88 | Marshall | Assistant Coach      | 24-8/NIT   |
| 1988-89 | Marshall | Assistant Coach      | 15-15      |
| 1989-90 | ULM      | Assistant Coach      | 22-8/NCAA  |
| 1990-91 | ULM      | Assistant Coach      | 25-8/NCAA  |
| 1991-92 | ULM      | Assistant Coach      | 19-10/NCAA |
| 1992-93 | ULM      | Assistant Coach      | 26-5/NCAA  |
| 1993-94 | ULM      | Assistant Coach      | 19-9       |
| 1994-95 | La. Tech | Assistant Coach      | 14-13      |
| 1995-96 | La. Tech | Associate Head Coach | 11-17      |
| 1996-97 | La. Tech | Associate Head Coach | 15-14      |
| 1997-98 | La. Tech | Associate Head Coach | 12-15      |
| 1998-99 | La. Tech | Head Coach           | 19-9       |
| 1999-00 | La. Tech | Head Coach           | 21-8       |
| 2000-01 | La. Tech | Head Coach           | 17-12      |
| 2001-02 | La. Tech | Head Coach           | 22-10/NIT  |
| 2002-03 | La. Tech | Head Coach           | 12-15      |
| 2003-04 | La. Tech | Head Coach           | 15-15      |
| 2004-05 | La. Tech | Head Coach           | 14-15      |
| 2005-06 | La. Tech | Head Coach           | 20-13/NIT  |
| 2006-07 | La. Tech | Head Coach           | 10-20      |
| 2008-09 | LSU      | Assistant Coach      | 27-8/NCAA  |
| 2009-10 | LSU      | Assistant Coach      | 11-20      |
| 2010-11 | ULM      | Head Coach           | 7-24       |
| 2011-12 | ULM      | Head Coach           | 3-26       |
| 2012-13 | ULM      | Head Coach           | 4-23       |
| 2013-14 | ULM      | Head Coach           | 8-14       |

#### PLAYING CAREER

- Played for ULM from 1978-82; Coached by Lenny Fant, Benny Hollis & Mike Vining
- 1979 Atlantic Sun Tournament Champions, NIT
- 1980 Atlantic Sun Regular Season Champions
- 1982 Atlantic Sun Tournament Champions, NCAA
- Two-time team captain ('81 & '82)
- Led team in assists twice

#### EDUCATION

- Bachelor's degree in general business, ULM (1982)
- Master's degree in guidance counseling, ULM (1986)

### ULM Quick Notes Continued...

- With four regular season games still remaining, ULM has already doubled its season win total and has topped its conference win total by two games from last season. ULM was 4-23 overall and 3-17 in SBC play last year

- In a 72-65 win over Arkansas State on Jan. 30, Amajoyi became the first ULM student-athlete this season to make 10 free throws in a single game. He also registered 29 minutes and five rebounds which matched career-highs

- The Warhawks swept a road weekend at Troy and South Alabama, defeating the Trojans 75-64 and the Jaguars 64-58. It was ULM's first two-game road winning streak since 2002-03

- Against Troy, the Warhawks shot over 80 percent from the free throw line for the first time this season (14-for-17, .824)

- The Warhawks opened league play with back-to-back overtime games for the first time in school history. ULM is 2-1 in overtime this season, and ULM head coach Keith Richard is 17-8 in his career

- In the first meeting between the Warhawks and the Ragin' Cajuns this season, ULM came away with a 103-98 double overtime victory in the SBC season opener on Jan. 4. Junior Tylor Ongwae led the Warhawks with 27 points and 11 rebounds. ULM had a season-high five double-figure scorings in the contest

- Senior Jayon James also notched a double-double against the Cajuns with 16 points and 12 rebounds. ULM had two student-athletes record a double-double in one game for the first time since Dec. 22, 2009

- ULM's 11 blocks against the Cajuns were the most by ULM since Dec. 2, 2006 when it had 10 against William Carey. ULM also held a 54-44 edge on the boards. The Warhawks later topped their season-high with 12 blocks against UALR at home

- The Warhawks played the eighth toughest non-conference schedule in the country, according to cbssports.com. ULM's opponents went a combined 71-30 in non-conference play as the Warhawks took on a pair of top-5 opponents

- ULM went 36 days inbetween its first two losses on the season. It was its longest stretch without a loss since 1993-94 when they went from Jan. 18 - Feb. 28 between defeats

- After defeating Thomas (Ga.) on Dec. 9, the Warhawks won three consecutive games for the first time since 2007-08. They got off to a 3-1 start on the season for the first time since 2004-05

- The Warhawks trailed Northwestern State by 18 in the second half before mounting their biggest comeback of the season on Nov. 21

- In ULM's home opener, it thumped Samford 86-52 on Nov. 18 and was up by 41 at one point in the second half. The 34-point win was the largest margin of victory for ULM since a 97-43 win over Union College (Ky.) on Jan. 3, 2009. It was ULM's most lop-sided score over a Division I program since Feb. 3, 2000 when it defeated Lamar 95-58

- Junior Marvin Williams posted a game-high 19 points against No. 5 Kansas in the season opener, outscoring Andrew Wiggins who was named Preseason National Player of the Year by cbssports.com. Williams went 8-for-13 from the field and grabbed a team-high six rebounds in 24 minutes. Wiggins scored 16.

- ULM earned the 2012-13 SBC team academic award and was one of 21 NCAA Division I men's basketball programs to earn Team Academic Excellence Awards from the National Association of Basketball Coaches

- The Warhawks carry a full scholarship roster for the first time under head coach Keith Richard after inheriting APR penalties. Richard is in his fourth season with the program

- ULM is without senior Amos Olatayo for the rest of the season after an ACL injury against WKU on Jan. 23. Olatayo was second on the team in scoring (13.2 ppg) and rebounding (5.3 rpg). He had 11 double-figure scoring games including three 20-plus games and one 30-point performance



# Warhawks Men's Basketball

University of Louisiana at Monroe



## Numerical Roster

| No. | Player             | Pos. | Ht.  | Wt. | Cl. | Hometown (Previous School)                 |
|-----|--------------------|------|------|-----|-----|--|
| 0   | Marvin Williams    | F/C  | 6-8  | 245 | JR  | Memphis, Tenn. (NW Florida State College)  |
| 1   | Jayon James        | F    | 6-6  | 225 | SR  | Paterson, N.J. (Lamar State-Port Arthur)   |
| 2   | DeMondre Harvey    | F    | 6-7  | 210 | SO  | Minden, La. (Pearl River CC)               |
| 3   | Marcelis Hansberry | G    | 6-0  | 185 | SR  | Jackson, Miss. (Provine HS)                |
| 4   | RJ McCray          | G    | 6-2  | 190 | SR  | Arlington, Texas (Grace Prep Academy)      |
| 10  | Amos Olatayo       | G    | 6-4  | 200 | SR  | Houston, Texas (Navarro College)           |
| 11  | Nick Coppola       | G    | 5-11 | 195 | FR  | Richmond, Va. (Benedictine Prep)           |
| 12  | Tylor Ongwae       | F    | 6-7  | 205 | JR  | Eldoret, Kenya (Ranger College)            |
| 13  | Chinedu Amajoyi    | G    | 6-3  | 195 | JR  | Rancho Cucamonga, Calif. (Kilgore College) |
| 15  | Kyle Koszuta       | G    | 6-2  | 190 | SO  | Niceville, Fla. (Niceville HS)             |
| 20  | Evan Sims          | F/C  | 6-8  | 235 | JR  | Houston, Texas (Lamar State-Port Arthur)   |
| 22  | Lance Richard      | G    | 5-10 | 170 | FR  | Monroe, La. (Sterlington HS)               |
| 23  | Millaun Brown      | F/C  | 6-7  | 230 | SR  | Gunnison, Miss. (East Mississippi CC)      |
| 33  | Daniel Grieves     | G/F  | 6-6  | 210 | SO  | Bay St. Louis, Miss. (Pearl River CC)      |
| 34  | Leon Carswell II   | F    | 6-3  | 210 | JR  | Bossier City, La. (Airline HS)             |
| 35  | Colten Ponder      | F    | 6-5  | 215 | SO  | Shreveport, La. (Calvary Baptist HS)       |

## COACHING STAFF

Head Coach: Keith Richard (ULM '82)

Assistant Coach: Ryan Cross (Buffalo '95)

Assistant Coach: Lonnie Cooper (Louisiana Tech '99)

Assistant Coach J.A. Anglin (LSU Shreveport '10)

Coordinator of Basketball Operations: Wyatt Hodges

## PRONUNCIATION

Keith/Lance RICHARD      Ree-CHARD

MILLAUN Brown      Mih-LAHN

JAYON James      Jay-AHN

AMOS OLATAYO      AIM-uhs Ole-ah-tay-O

CHINEDU AMAJOYI      Chin-ih-due Om-uh-joy

TYLOR ONGWAE

Kyle KOSZUTA

Nick COPPOLA

Tie-ler Ong-why

Kus-zoo-tuh

Cuh-pole-luh

## BY CLASS

Seniors (5).....Millaun Brown  
 .....Marcelis Hansberry  
 .....Jayon James  
 .....R.J. McCray  
 .....Amos Olatayo  
 Juniors (5).....Chinedu Amajoyi  
 .....Leon Carswell  
 .....Tylor Ongwae  
 .....Evan Sims  
 .....Marvin Williams  
 Sophomores (4) .....Daniel Grieves  
 .....DeMondre Harvey  
 .....Kyle Koszuta  
 .....Colten Ponder  
 Freshmen (2).....Nick Coppola  
 .....Lance Richard

## BY POSITION

Guards.....Chinedu Amajoyi  
 .....Nick Coppola  
 .....Marcelis Hansberry  
 .....Kyle Koszuta  
 .....RJ McCray  
 .....Amos Olatayo  
 .....Lance Richard  
 Guard/Foward .....Daniel Grieves  
 Forwards .....Leon Carswell  
 .....DeMondre Harvey  
 .....Jayon James  
 .....Tylor Ongwae  
 .....Colten Ponder  
 Forward/Center .....Millaun Brown  
 .....Evan Sims  
 .....Marvin Williams

## BY STATE/COUNTRY

California.....Chinedu Amajoyi  
 Florida.....Kyle Koszuta  
 Kenya .....Tylor Ongwae  
 Louisiana.....Leon Carswell  
 .....DeMondre Harvey  
 .....Colten Ponder  
 .....Lance Richard  
 Mississippi.....Millaun Brown  
 .....Daniel Grieves  
 .....Marcelis Hansberry  
 New Jersey .....Jayon James  
 Tennessee .....Marvin Williams  
 Texas .....R.J. McCray  
 .....Amos Olatayo  
 .....Evan Sims  
 Virginia .....Nick Coppola

## WE ARE ULM

### 12 REGULAR SEASON CHAMPIONSHIPS

1961-62 - Gulf States Conference  
 1964-65 - Gulf States Conference  
 1978-79 - Atlantic Sun Conference  
 1979-80 - Atlantic Sun Conference  
 1985-86 - Southland Conference  
 1989-90 - Southland Conference  
 1990-91 - Southland Conference  
 1992-93 - Southland Conference  
 1993-94 - Southland Conference  
 1995-96 - Southland Conference  
 1996-97 - Southland Conference  
 2006-07 - Sun Belt Conference West Division

### NINE POST-SEASON APPEARANCES

1978-79 - NIT  
 1981-82 - NCAA Tournament  
 1985-86 - NCAA Tournament  
 1987-88 - NIT  
 1989-90 - NCAA Tournament  
 1990-91 - NCAA Tournament  
 1991-92 - NCAA Tournament  
 1992-93 - NCAA Tournament  
 1995-96 - NCAA Tournament

### EIGHT TOURNAMENT CHAMPIONSHIPS

1978-79 - Atlantic Sun Conference  
 1981-82 - Atlantic Sun Conference  
 1985-86 - Southland Conference  
 1989-90 - Southland Conference  
 1990-91 - Southland Conference  
 1991-92 - Southland Conference  
 1992-93 - Southland Conference  
 1995-96 - Southland Conference



# Warhawks Men's Basketball

University of Louisiana at Monroe



## ULM Quick Facts

Location \_\_\_\_\_ Monroe, La.  
Enrollment \_\_\_\_\_ 8,858  
Founded \_\_\_\_\_ 1931  
Nickname/Mascot \_\_\_\_\_ Warhawks/Ace  
Colors \_\_\_\_\_ Maroon & Gold  
President \_\_\_\_\_ Dr. Nick Bruno  
Director of Athletics \_\_\_\_\_ Brian Wickstrom  
Conference \_\_\_\_\_ Sun Belt  
Affiliation \_\_\_\_\_ NCAA Division I  
All-Time Record \_\_\_\_\_ 907-808 (62nd season)  
Winning Seasons \_\_\_\_\_ 38 (20+ wins 10 times)  
Home Venue \_\_\_\_\_ Fant-Ewing Coliseum (7000)  
Playing Surface \_\_\_\_\_ Maple  
Opened \_\_\_\_\_ 1971  
Press Row Phone \_\_\_\_\_ 318-342-6920

Head Coach \_\_\_\_\_ Keith Richard  
Record at ULM \_\_\_\_\_ 22-87 (fourth year)  
Career Record \_\_\_\_\_ 172-204 (13th year)  
Assistant Coach \_\_\_\_\_ Ryan Cross  
Assistant Coach \_\_\_\_\_ Lonnie Cooper  
Assistant Coach \_\_\_\_\_ J.A. Anglin  
Coordinator of MBB Ops. \_\_\_\_\_ Wyatt Hodges  
Athletic Trainer \_\_\_\_\_ Jeremy Teblum  
Strength Coach \_\_\_\_\_ Brian Seitz

Website \_\_\_\_\_ www.ulmwarhawks.com  
Facebook \_\_\_\_\_ www.facebook.com/warhawks  
Twitter \_\_\_\_\_ @ULM\_MBB

## Scouting South Alabama

South Alabama (9-18, 3-11 SBC) has won two of its last three games including a 69-62 victory at WKU. In their last outing, the Jaguars used a big first half to go on and defeat Troy 86-78. Augustine Rubit tallied a double-double in the game with 22 points and 10 rebounds. USA led 45-24 at halftime.

Rubit leads the team with 17.2 points and 9.3 rebounds per game. He was the Sun Belt Conference Player of the Year last season and was named Preseason Player of the Year this season. Antoine Allen also averages in double-figures with 10.8 points per game and 11.3 ppg against league opponents.

In the first meeting between ULM and USA on Jan. 18, the Jaguars were up 34-27 at half-time before the Warhawks came back to win 64-58. ULM began the second half on a 7-0 run to quickly tie it. It trailed 52-51 with 5:22 left before going on an 8-1 run to lead 60-53 at the 2:18 mark. Tylor Ongwae was one of four Warhawks to reach double-figures with a game-high 19 points. Rubit had 18 points and 12 rebounds.

Matthew Graves is in his first season as head coach of the Jaguars. He spent the previous 10 seasons as an assistant coach at Butler where he helped it advance to the NCAA Tournament six of the last seven years. Graves helped the program to an overall record of 244-98 (71.3%), a berth in national postseason tournaments each of the last eight seasons and eight straight years with 20-plus victories. While on the Butler staff, Graves was listed No. 2 on CollegeInsider.com's ranking of top 25 mid-major assistants in 2009 while the previous year FoxSports.com recognized him as one of the top 10 mid-major assistants in the country.

Graves started as an assistant coach at North Central and Ben Davis High Schools in Indianapolis, joining the Bulldog staff as coordinator of men's basketball operations in 2001. During his first two seasons at Butler, the Bulldogs won 53 games and advanced to the Sweet 16 of the 2003 NCAA Tournament.

## Sun Belt Conference Preseason Coaches Poll

1. WKU - 91 (5)
2. South Alabama - 78 (2)
3. Arkansas State - 74
- T-4. Georgia State - 73 (2)
- T-4. UL-Lafayette - 73 (1)
6. UALR - 48
7. UT Arlington - 36
8. Texas State - 34
9. Troy - 26
10. ULM - 17

**Jayon James**  
- Preseason SBC  
All-Conference  
Third-Team

- CSM Preseason  
All-SBC  
Third-Team

**Amos Olatayo**  
- CSM Preseason  
All-SBC  
Third-Team

## All-Time Series History vs. South Alabama

South Alabama leads 10-5  
At ULM: USA leads 5-2  
At USA: USA leads 5-2  
On Neutral Courts: ULM leads 1-0

## 2013-14 NON-CONFERENCE STRENGTH OF SCHEDULE RANKINGS

according to cbssports.com (1/1/14)

| RK  | School           | SOS          | Opp. Winning % |
|-----|------------------|--------------|----------------|
| 1.  | New Orleans      | .6951        | .7669          |
| 2.  | Kansas           | .6840        | .7500          |
| 3.  | Long Beach State | .6443        | .7166          |
| 4.  | BYU              | .6323        | .6949          |
| 5.  | Massachusetts    | .6262        | .6574          |
| 6.  | Eastern Michigan | .6192        | .6448          |
| 7.  | Colorado         | .6162        | .6597          |
| 8.  | <b>ULM</b>       | <b>.6152</b> | <b>.6744</b>   |
| 9.  | Alabama          | .6142        | .6468          |
| 10. | Oakland          | .6130        | .6585          |

## RICHARD VS. 2013-14 OPPONENTS

|                      |                 |
|----------------------|-----------------|
| Arkansas State       | .....6-8        |
| Georgia State        | .....0-2        |
| Kansas               | .....0-1        |
| Louisiana Tech       | .....0-4        |
| UL-Lafayette         | .....7-12       |
| LSU                  | .....0-2        |
| Northwestern State   | .....2-1        |
| Ohio State           | .....0-1        |
| Ole Miss             | .....0-2        |
| Samford              | .....1-0        |
| <b>South Alabama</b> | <b>.....5-5</b> |
| Texas-Arlington      | .....0-2        |
| Texas State          | .....0-2        |
| Thomas               | .....1-0        |
| Troy                 | .....1-4        |
| UALR                 | .....8-6        |
| WKU                  | .....5-9        |







# Warhawks Men's Basketball

*University of Louisiana at Monroe*



## 2013-14 South Alabama Men's Basketball Roster

| No. | Name                   | Pos. | Ht.  | Wt. | Yr-Exp. | Hometown (Previous School/High School)                     |
|-----|------------------------|------|------|-----|---------|--|
| 1   | Ken Williams           | G    | 6-2  | 175 | Fr.-HS  | Manvel, Texas (Episcopal HS)                               |
| 3   | Isaiah Maston          | G    | 6-3  | 185 | Fr.-HS  | Birmingham, Ala. (Wenonah HS)                              |
| 4   | Barrington Stevens III | G    | 5-10 | 180 | So.-1L  | Allen, Texas (St. Thomas More Prep/Allen)                  |
| 10  | Georgi Boyanov         | F    | 6-8  | 200 | Fr.-HS  | Lovech, Bulgaria (General Vladimir Stoychev Sports School) |
| 11  | E.J. Conley            | G    | 5-9  | 150 | So.-SQ  | Enterprise, Ala. (Mobile/Enterprise HS)                    |
| 12  | Antoine Allen          | G    | 6-1  | 175 | Sr.-1L  | Baltimore, Md. (Palm Beach State JC/Lake Clifton)          |
| 13  | Mychal Ammons          | F    | 6-6  | 225 | Jr.-2L  | Vicksburg, Miss. (Vicksburg HS)                            |
| 20  | Aakim Saintil          | G    | 6-0  | 165 | Fr.-HS  | Roselle, N.J. (Roselle Catholic HS)                        |
| 21  | Augustine Rubit        | F    | 6-7  | 220 | Sr.-3L  | Houston, Texas (Christian Life Center Academy)             |
| 24  | Dionte Ferguson        | F    | 6-6  | 220 | Jr.-RS  | Prattville, Ala. (Morehead State/Prattville HS)            |
| 25  | T.J. Johnson           | G    | 6-2  | 175 | Fr.-HS  | Tamarac, Fla. (Deerfield Beach HS)                         |
| 31  | Viktor Juricek         | F    | 6-11 | 210 | So.-1L  | Prievidza, Slovakia (Canarias Basketball Academy)          |
| 32  | Austin Karazsia        | F    | 6-8  | 220 | Fr.-HS  | Linton, Ind. (Linton-Stockton HS)                          |

### Coaching staff

|                             |   |
|-----------------------------|---|
| Head coach:                 | Matthew Graves (Butler '98), first season           |
| Assistant coaches:          | Darnell Archey (Butler '03), first season           |
|                             | Dan Matic (Trinity International '07), first season |
|                             | Russ Willemsen (Lee '04), first season              |
| Director of operations:     | Chris Coker (North Alabama '94), seventh season     |
| Assistant athletic trainer: | Matthew Brown (Indiana State '06), fifth season     |

### Pronunciation Guide

Mychal Ammons – Michael AMM-ons  
 Georgi Boyanov – GEORGE-ee BOY-ahn-ov  
 Dionte Ferguson – Dee-ON-tay  
 Viktor Juricek – YUR-uh-chek  
 Prievidza – Pree-uh-VID-za  
 Austin Karazsia – Care-uh-ZEE-uh  
 Augustine Rubit – RUE-bit  
 Aakim Saintil – Ah-KEEM Sain-TEEL

## SUN BELT CONFERENCE STANDINGS

| School                   | SBC         | Pct.        | Overall     | Pct.        | Streak    |
|--------------------------|-------------|-------------|-------------|-------------|-----------|
| 1. Georgia State         | 13-1        | .929        | 20-7        | .741        | W3        |
| 2. WKU                   | 10-4        | .714        | 18-9        | .667        | W1        |
| 3. Arkansas State        | 9-5         | .643        | 16-9        | .640        | W2        |
| 4. UL-Lafayette          | 9-6         | .600        | 18-10       | .643        | L1        |
| 5. UT Arlington          | 7-7         | .500        | 12-14       | .462        | W1        |
| 6. UALR                  | 7-8         | .467        | 12-15       | .444        | L5        |
| <b>7. ULM</b>            | <b>5-9</b>  | <b>.357</b> | <b>8-14</b> | <b>.364</b> | <b>L2</b> |
| T-8. Troy                | 4-10        | .286        | 9-17        | .346        | L2        |
| T-8. Texas State         | 4-10        | .286        | 8-19        | .296        | L1        |
| <b>10. South Alabama</b> | <b>3-11</b> | <b>.214</b> | <b>9-18</b> | <b>.333</b> | <b>W1</b> |



**SUN BELT**<sup>™</sup>  
CONFERENCE



# Warhawks Men's Basketball

University of Louisiana at Monroe



**SUN BELT**<sup>™</sup>  
CONFERENCE

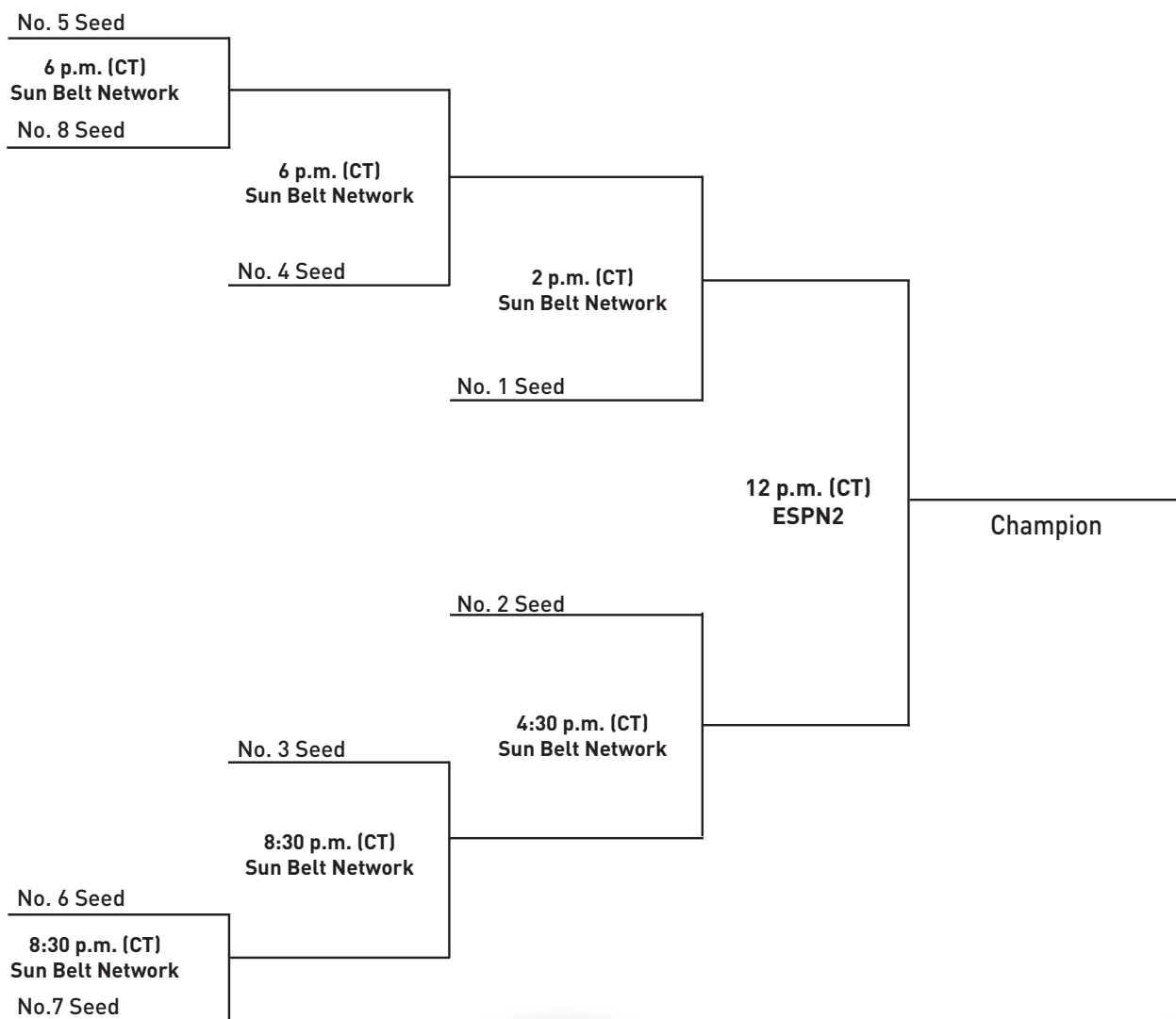
## 2014 MEN'S BASKETBALL CHAMPIONSHIP MARCH 13-16 - LAKEFRONT ARENA - NEW ORLEANS

Opening Round  
Thursday, March 13

Quarterfinals  
Friday, March 14

Semifinals  
Saturday, March 15

Championship  
Sunday, March 16





# Warhawks Men's Basketball

University of Louisiana at Monroe



## Number of times in 2013-14 a ULM student-athlete has led the team in...

| Points              |    | Free Throws Made    |    | Blocks  |    |
|---------------------|----|---------------------|----|---|----|
| Taylor Ongwae       | 14 | Taylor Ongwae       | 13 | Taylor Ongwae   | 6  |
| Amos Olatayo        | 3  | Jayon James         | 5  | Marvin Williams   | 5  |
| Jayon James         | 2  | Marvin Williams     | 2  | Jayon James   | 5  |
| Marvin Williams     | 2  | Amos Olatayo        | 2  | DeMondre Harvey   | 5  |
| Nick Coppola        | 1  | Chinedu Amajoyi     | 1  | Amos Olatayo  | 4  |
|                     |    | Nick Coppola        | 1  | Millaun Brown   | 1  |
|                     |    | Kyle Koszuta        | 1  | Evan Sims   | 1  |
|                     |    | R.J. McCray         | 1  | Chinedu Amajoyi   | 1  |
| Rebounds            |    | Free Throw Attempts |    | Steals  |    |
| Taylor Ongwae       | 8  | Taylor Ongwae       | 10 | Taylor Ongwae   | 12 |
| Jayon James         | 7  | Jayon James         | 7  | Jayon James   | 9  |
| Amos Olatayo        | 3  | Amos Olatayo        | 3  | Nick Coppola  | 5  |
| Marvin Williams     | 3  | Nick Coppola        | 2  | Amos Olatayo  | 3  |
| DeMondre Harvey     | 3  | Chinedu Amajoyi     | 1  | R.J. McCray   | 3  |
| Nick Coppola        | 1  | R.J. McCray         | 1  | Kyle Koszuta  | 3  |
|                     |    | Marvin Williams     | 1  | DeMondre Harvey   | 3  |
|                     |    |                     |    | Chinedu Amajoyi   | 3  |
|                     |    |                     |    | Marvin Williams   | 3  |
|                     |    |                     |    | Evan Sims   | 1  |
| Assists             |    | 3FG Made            |    | Minutes   |    |
| Jayon James         | 15 | Daniel Grieves      | 9  | Nick Coppola  | 9  |
| Nick Coppola        | 9  | Taylor Ongwae       | 7  | Taylor Ongwae   | 6  |
| Kyle Koszuta        | 2  | Amos Olatayo        | 7  | Jayon James   | 6  |
| R.J. McCray         | 2  | Nick Coppola        | 4  | Amos Olatayo  | 2  |
| Daniel Grieves      | 1  | R.J. McCray         | 2  | Daniel Grieves  | 1  |
| Taylor Ongwae       | 1  | Chinedu Amajoyi     | 1  | Kyle Koszuta  | 1  |
|                     |    |                     |    | R.J. McCray   | 1  |
| Field Goals Made    |    | 3FG Attempts        |    | Note: If multiple student-athletes tie in a category in a single game, they all receive credit for leading the team |    |
| Taylor Ongwae       | 15 | Daniel Grieves      | 9  |   |    |
| Amos Olatayo        | 4  | Amos Olatayo        | 7  |   |    |
| Marvin Williams     | 3  | Nick Coppola        | 3  |   |    |
| Jayon James         | 2  | Kyle Koszuta        | 2  |   |    |
| Nick Coppola        | 1  | Chinedu Amajoyi     | 2  |   |    |
|                     |    | Taylor Ongwae       | 2  |   |    |
| Field Goal Attempts |    |                     |    |   |    |
| Taylor Ongwae       | 16 |                     |    |   |    |
| Amos Olatayo        | 4  |                     |    |   |    |
| Jayon James         | 2  |                     |    |   |    |
| Daniel Grieves      | 1  |                     |    |   |    |
| Marvin Williams     | 1  |                     |    |   |    |

## Double-Doubles

### 2013-14 Season

#### Taylor Ongwae (3)

27 pt, 11 reb vs. ULL (1/4/14)  
27 pt, 10 reb vs. GSU (1/25/14)  
16 pt, 11 reb at ULL (2/1/14)

#### Jayon James (2)

16 pt, 12 reb vs. ULL (1/4/14)  
12 pt, 11 reb vs. UALR (2/15/14)

#### Marvin Williams (1)

13 pt, 10 reb at NSU (11/21/13)

### Career

#### Jayon James (7)

10 pt, 12 reb vs SLU (12/10/12)  
26 pt, 10 reb vs FAU (12/12/12)  
11 pt, 12 reb vs SU (12/13/12)  
19 pt, 10 reb at NT (1/5/13)  
11 pt, 15 ast at FIU (2/2/13)  
16 pt, 12 reb vs. ULL (1/4/14)  
12 pt, 11 reb vs. UALR (2/15/14)

## Individual Career Totals for Returning Student-Athletes

Only includes statistics at ULM

### Points

|              |     |
|--------------|-----|
| A. Olatayo   | 549 |
| J. James     | 472 |
| R.J. McCray  | 404 |
| M. Hansberry | 390 |
| M. Brown     | 189 |
| K. Koszuta   | 141 |

### Steals

|              |    |
|--------------|----|
| J. James     | 65 |
| R.J. McCray  | 59 |
| M. Hansberry | 46 |
| A. Olatayo   | 46 |
| K. Koszuta   | 32 |
| M. Brown     | 27 |

### Field Goals M-A

|              |         |
|--------------|---------|
| A. Olatayo   | 238-517 |
| J. James     | 180-413 |
| M. Hansberry | 142-353 |
| R.J. McCray  | 145-349 |
| M. Brown     | 83-149  |
| K. Koszuta   | 46-130  |

### Free Throws M-A

|              |         |
|--------------|---------|
| J. James     | 108-209 |
| A. Olatayo   | 99-170  |
| R.J. McCray  | 80-125  |
| M. Hansberry | 80-124  |
| M. Brown     | 21-55   |
| K. Koszuta   | 15-24   |

### Rebounds

|              |     |
|--------------|-----|
| J. James     | 303 |
| A. Olatayo   | 207 |
| M. Brown     | 176 |
| R.J. McCray  | 150 |
| M. Hansberry | 137 |
| K. Koszuta   | 33  |

### Three-Pointers M-A

|              |        |
|--------------|--------|
| A. Olatayo   | 44-148 |
| K. Koszuta   | 34-90  |
| R.J. McCray  | 34-105 |
| M. Hansberry | 26-107 |
| J. James     | 4-37   |

### Assists

|              |     |
|--------------|-----|
| J. James     | 236 |
| R.J. McCray  | 125 |
| M. Hansberry | 110 |
| K. Koszuta   | 55  |
| A. Olatayo   | 31  |
| M. Brown     | 14  |

### Games/Starts

|              |       |
|--------------|-------|
| R.J. McCray  | 95/35 |
| M. Hansberry | 71/28 |
| J. James     | 49/47 |
| K. Koszuta   | 46/2  |
| M. Brown     | 41/25 |
| A. Olatayo   | 37/30 |

### Blocks

|              |    |
|--------------|----|
| J. James     | 25 |
| A. Olatayo   | 17 |
| R.J. McCray  | 15 |
| M. Brown     | 10 |
| M. Hansberry | 2  |

### Minutes

|              |      |
|--------------|------|
| R.J. McCray  | 1878 |
| J. James     | 1641 |
| M. Hansberry | 1387 |
| A. Olatayo   | 1101 |
| M. Brown     | 885  |
| K. Koszuta   | 602  |

## Double-Figures and Categorical Highs

| Double-Figures  | Season 10+ Points      | Season 10+ Rebs | Season 10+ Asts |
|-----------------|------------------------|-----------------|-----------------|
| Taylor Ongwae   | 20 times (20+ 8 times) | 3 times         |                 |
| Jayon James     | 12 times               | 3 times         |                 |
| Amos Olatayo    | 11 times (20+ 3 times) |                 |                 |
| Nick Coppola    | 6 times                |                 |                 |
| Marvin Williams | 5 times                | 1 time          |                 |
| Daniel Grieves  | 3 times                |                 |                 |
| Chinedu Amajoyi | 2 times                |                 |                 |
| R.J. McCray     | 2 times                |                 |                 |
| DeMondre Harvey | 1 time                 |                 |                 |

| Double-Figures     | Career 10+ Points       | Career 10+ Rebs | Career 10+ Asts |
|--------------------|-------------------------|-----------------|-----------------|
| Amos Olatayo       | 28 times (20+ 12 times) | 1 time          |                 |
| Jayon James        | 25 times (20+ 1 time)   | 9 times         | 2 times         |
| Taylor Ongwae      | 20 times (20+ 8 times)  | 3 times         |                 |
| Marcelis Hansberry | 15 times (20+ 1 time)   |                 |                 |
| R.J. McCray        | 13 times                |                 |                 |
| Nick Coppola       | 6 times                 |                 |                 |
| Millaun Brown      | 5 times (20+ 1 time)    | 1 time          |                 |
| Marvin Williams    | 5 times                 | 1 time          |                 |
| Kyle Koszuta       | 3 times                 |                 |                 |
| Daniel Grieves     | 3 times                 |                 |                 |
| Chinedu Amajoyi    | 2 times                 |                 |                 |
| DeMondre Harvey    | 1 time                  |                 |                 |

### Single-Game Categorical Highs 2013-14

|                  |  |
|------------------|--|
| Points           | Amos Olatayo - 30, at NSU  |
| Field Goals Made | Amos Olatayo/Taylor Ongwae - 11 (Olatayo at NSU) (Ongwae vs ULL) |
| 3FG Made         | Amos Olatayo/Taylor Ongwae/Nick Coppola - 4                      |
| Free Throws Made | Chinedu Amajoyi - 10 (vs. Arkansas State)                        |
| Rebounds         | Jayon James - 12 (vs. UL-Lafayette)                              |
| Assists          | Jayon James - 9 (at UTA)   |
| Steals           | Taylor Ongwae - 5 (vs. UALR)                                     |
| Blocks           | Jayon James/Amos Olatayo - 5 (James vs. UALR) (Olatayo vs. ULL)  |





# Warhawks Men's Basketball

University of Louisiana at Monroe



## The Last Time ULM...

Scored 100 or more points  
Scored 90 or more points  
Scored 80 or more points  
Scored fewer than 40 points  
Held an opponent to under 50 points  
Held an opponent to under 40 points  
Won by 30 or more points  
Won by 40 or more points  
Won by 50 or more points  
Won by 60 or more points  
Had four double-digit scorers  
Had five double-digit scorers  
Had no double-digit scorers  
Had 20 or more assists  
Had fewer than 10 assists  
Had 10 or more blocks  
Had 10 or more steals  
Had 20 or more turnovers  
Had fewer than 10 turnovers  
Made 30 or more field goals  
Made 40 or more field goals  
Made 50 or more field goals  
Shot over 50 pct from field  
Shot over 60 pct from field  
Shot less than 20 pct from field  
Made 10 or more 3-pointers  
Made 15 or more 3-pointers  
Shot over 50 pct from 3FG  
Shot over 60 pct from 3FG  
Shot less than 20 pct from 3FG  
Made 20 or more free throws  
Made 30 or more free throws  
Shot over 80 pct free throws  
Shot over 90 pct free throws  
Won on a buzzer beater  
Lost on a buzzer beater  
Won on the last possession  
Lost on the last possession  
Won in overtime  
Won in double overtime  
Won in triple overtime  
Had two double-doubles in one game  
Had two 20+ scorers in one game

105, vs. UL-Lafayette (1/4/2014)  
105, vs. UL-Lafayette (1/4/2014)  
105, vs. UL-Lafayette (1/4/2014)  
36, vs. Texas State (1/11/2014)  
49, vs. UALR (2/15/2014)  
37, vs. LeTourneau (11/25/1991)  
34, vs. Samford (11/18/2013)  
54, vs. Union College (1/3/2009)  
54, vs. Union College (1/3/2009)  
63, vs. LeTourneau (11/25/1991)  
vs. Arkansas State (1/30/2014)  
vs. UL-Lafayette (1/4/2014)  
at No. 3 Ohio State (12/27/2013)  
20, at FIU (2/2/2013)  
7, vs. Texas State (1/11/2014)  
12, vs. UALR (2/15/2014)  
12, vs. UALR (2/15/2014)  
20, vs. Thomas (12/9/2013)  
9, at UL-Lafayette (2/1/2014)  
33, at UT Arlington (1/9/2014)  
41, vs. Texas College (12/22/2003)  
51, vs. Georgia Southern (2/8/1979)  
.510 (23-45), at Texas State (2/6/2014)  
.620 (31-50), at Nicholls State (11/28/2011)  
.185 (10-54) at No. 3 Ohio State (12/27/2013)  
10, at UT Arlington (1/9/2014)  
15, vs. Middle Tennessee (1/24/2008)  
.643 (9-14), at Troy (1/16/2014)  
.643 (9-14), at Troy (1/16/2014)  
.190 (4-21), vs. Georgia State (1/25/2014)  
24, vs. UL-Lafayette (1/4/2014)  
30, vs. Troy (12/31/2009)  
.824 (14-17), at Troy (1/16/2014)  
1.000 (5-5), at Texas A&M (12/10/2011)  
W, 60-58, vs. SFA (Malcolm Thomas Jumper) (11/25/2008)  
L, 76-73, at La. Tech (Kyle Gibson 3FG) (12/2/2009)  
W, 65-64, vs. FAU (Trent Mackey 3FG, 8 secs) (12/29/2012)  
L, 65-64, vs. SFA (Zac Downing 3FG, 4 secs) (11/23/2010)  
W, 103-98 (2OT), vs. UL-Lafayette (1/4/2014)  
W, 103-98 (2OT), vs. UL-Lafayette (1/4/2014)  
W, 107-106 (3OT), at La. Tech (1/5/1970)  
Tylor Ongwae & Jayon James, vs. UL-Lafayette (1/4/2014)  
Tylor Ongwae (25) & Amos Olatayo (20), at UT Arlington (1/9/2014)

## A ULM Player...

Had a double-double (pts-rbs)  
Had a double-double (pts-asts)  
Had a triple-double  
Had 20 points or more  
Had 30 points or more  
Had 40 points or more  
Had 50 points or more  
Made 10 or more field goals  
Made 15 or more field goals  
Made five or more 3FG  
Made 10 or more FT  
Had 10 or more rebounds  
Had 15 or more rebounds  
Had 20 or more rebounds  
Had 25 or more rebounds  
Had 30 or more rebounds  
Had 10 or more assists  
Had 15 or more assists  
Had five or more steals  
Had 10 or more steals  
Had five or more blocks  
Had 10 or more blocks  
Played 40 minutes or more

Jayon James (12 pts and 11 rebs), vs. UALR (2/15/2014)  
Jayon James (11 pts and 15 asts), at FIU (2/2/2013)  
Wojciech Mydra (11 pts, 10 rebs, 10 blks) vs. SHSU (1/24/2002)  
Tylor Ongwae (25), vs. UALR (2/15/2014)  
Amos Olatayo (30), at Northwestern State (11/21/2013)  
Henry Steele (40), vs. Louisiana College (1/23/1971)  
Glynn Saulters (51), vs. Nicholls State (1/1/1968)  
Tylor Ongwae (10), vs. Georgia State (1/25/2014)  
Mike Smith (15), vs. Houston (12/15/1999)  
Trent Mackey (5), vs. North Texas (2/14/2013)  
Chinedu Amajoyi (10-12), vs. Arkansas State (1/30/2014)  
Jayon James (11), vs. UALR (2/15/2014)  
Lance Brasher (17), vs. Middle Tennessee (1/24/2008)  
DeAndre Alexander (20), vs. Lamar (3/2/2005)  
Calvin Natt (25), vs. Miss. State (12/5/1978)  
Calvin Natt (31) vs. Georgia Southern (12/29/1976)  
Jayon James (10), vs. Arkansas State (2/16/2013)  
Larry Saults (19), vs. Mississippi College (1/7/1970)  
Tylor Ongwae (5), vs. UALR (2/15/2014)  
Arthur Hayes (10), vs. McNeese State (1983)  
Jayon James (5), vs. UALR (2/15/2014)  
Wojciech Myrda (13), vs. UTSA (3/2/2002)  
Nick Coppola (40), vs. UT Arlington (2/13/14)

## MISCELLANEOUS STATS 2013-14

### Largest halftime lead

24, vs. Thomas, 46-22

### Largest halftime deficit

21, at No. 3 OSU, 41-20

### Largest halftime lead surrendered in a loss

None (have held four halftime leads)

### Largest halftime deficit overcome in a win

7, at South Alabama, 34-27 (won 64-58)

### Largest lead any time

41, vs. Samford, 84-43, 3:01 left 2H

### Largest deficit any time

40, at No. 3 OSU, 71-31, 58 secs left 2H

### Largest lead surrendered in a loss

8, at UL-Lafayette (2/1/2014)

### Largest deficit overcome in a win

18, at Northwestern State (11/21/13)

### Most points scored in a half

46, vs. Thomas, first half

### Fewest points scored in a half

9, vs. Texas State, second half

### Most points allowed in a half

48, vs. LA Tech, first half

### Fewest points allowed in a half

13, vs. UALR, first half

### Largest Rebounding Advantage

+18, vs. Thomas, 41-23

### Largest Rebounding Disadvantage

-15, at WKU, 43-28

### Highest Plus Turnover Differential

+7, vs. Arkansas State, 14-7

### Highest Minus Turnover Differential

-14, at NSU, 29-15

### Most 3FG Made In a Game

10, at UT Arlington (10-23)

### Most 3FG Allowed in a Game

13, at UT Arlington (13-29)



# Warhawks Men's Basketball

University of Louisiana at Monroe



## 2013-14 ULM MEN'S BASKETBALL

Overall Stats

### ULM Combined Team Statistics (as of Feb 24, 2014)

#### All games

| RECORD:        | OVERALL | HOME | AWAY | NEUTRAL |
|----------------|---------|------|------|---------|
| ALL GAMES      | 8-14    | 5-5  | 3-9  | 0-0     |
| CONFERENCE     | 5-9     | 3-4  | 2-5  | 0-0     |
| NON-CONFERENCE | 3-5     | 2-1  | 1-4  | 0-0     |

| #              | Player            | gp-gs | min  | avg  | Total    |      | 3-Point |      | F-Throw |       | Rebounds |     |     |      | pf  | dq | a   | to  | blk | stl | pts  | avg  |
|----------------|-------------------|-------|------|------|----------|------|---------|------|---------|-------|----------|-----|-----|------|-----|----|-----|-----|-----|-----|------|------|
|                |                   |       |      |      | fg-fga   | fg%  | 3fg-fga | 3fg% | ft-fa   | ft%   | off      | def | tot | avg  |     |    |     |     |     |     |      |      |
| 12             | Ongwae, Tylor     | 22-22 | 699  | 31.8 | 130-297  | .438 | 23-81   | .284 | 89-114  | .781  | 39       | 88  | 127 | 5.8  | 59  | 3  | 31  | 38  | 16  | 29  | 372  | 16.9 |
| 10             | Olatayo, Amos     | 14-11 | 392  | 28.0 | 68-150   | .453 | 20-63   | .317 | 29-51   | .569  | 22       | 52  | 74  | 5.3  | 23  | 0  | 10  | 32  | 8   | 13  | 185  | 13.2 |
| 01             | James, Jayon      | 22-21 | 679  | 30.9 | 80-166   | .482 | 1-10    | .100 | 57-98   | .582  | 22       | 116 | 138 | 6.3  | 57  | 1  | 99  | 56  | 15  | 26  | 218  | 9.9  |
| 00             | Williams, Marvin  | 20-17 | 471  | 23.6 | 67-147   | .456 | 1-5     | .200 | 24-43   | .558  | 33       | 51  | 84  | 4.2  | 55  | 2  | 9   | 30  | 22  | 11  | 159  | 8.0  |
| 11             | Coppola, Nick     | 22-22 | 709  | 32.2 | 45-120   | .375 | 19-47   | .404 | 25-38   | .658  | 9        | 51  | 60  | 2.7  | 46  | 1  | 75  | 51  | 0   | 11  | 134  | 6.1  |
| 33             | Grieves, Daniel   | 20-1  | 271  | 13.6 | 30-84    | .357 | 24-69   | .348 | 5-8     | .625  | 8        | 22  | 30  | 1.5  | 33  | 0  | 8   | 8   | 1   | 5   | 89   | 4.5  |
| 13             | Amajoyi, Chinedu  | 17-10 | 243  | 14.3 | 18-47    | .383 | 12-25   | .480 | 20-29   | .690  | 9        | 32  | 41  | 2.4  | 13  | 0  | 7   | 13  | 2   | 7   | 68   | 4.0  |
| 04             | McCray, RJ        | 18-1  | 283  | 15.7 | 22-62    | .355 | 7-24    | .292 | 15-21   | .714  | 5        | 17  | 22  | 1.2  | 22  | 0  | 21  | 18  | 3   | 11  | 66   | 3.7  |
| 02             | Harvey, DeMondre  | 22-4  | 322  | 14.6 | 30-56    | .536 | 0-0     | .000 | 8-19    | .421  | 30       | 45  | 75  | 3.4  | 45  | 2  | 14  | 14  | 12  | 9   | 68   | 3.1  |
| 15             | Koszuta, Kyle     | 19-0  | 190  | 10.0 | 14-46    | .304 | 10-35   | .286 | 2-6     | .333  | 2        | 6   | 8   | 0.4  | 13  | 0  | 7   | 8   | 0   | 9   | 40   | 2.1  |
| 34             | Carswell II, Leon | 1-0   | 5    | 5.0  | 0-0      | .000 | 0-0     | .000 | 2-2     | 1.000 | 0        | 2   | 2   | 2.0  | 1   | 0  | 0   | 2   | 0   | 0   | 2    | 2.0  |
| 23             | Brown, Millaun    | 14-0  | 143  | 10.2 | 9-19     | .474 | 0-0     | .000 | 4-13    | .308  | 17       | 14  | 31  | 2.2  | 22  | 1  | 1   | 9   | 2   | 3   | 22   | 1.6  |
| 20             | Sims, Evan        | 9-1   | 91   | 10.1 | 4-13     | .308 | 0-1     | .000 | 1-4     | .250  | 3        | 6   | 9   | 1.0  | 17  | 1  | 2   | 6   | 2   | 1   | 9    | 1.0  |
| 35             | Ponder, Colten    | 1-0   | 2    | 2.0  | 0-0      | .000 | 0-0     | .000 | 0-0     | .000  | 0        | 0   | 0   | 0.0  | 0   | 0  | 0   | 0   | 0   | 0   | 0    | 0.0  |
| Team           |                   |       |      |      |          |      |         |      |         |       | 29       | 28  | 57  |      |     |    | 10  |     |     |     |      |      |
| Total.....     |                   | 22    | 4500 |      | 517-1207 | .428 | 117-360 | .325 | 281-446 | .630  | 228      | 530 | 758 | 34.5 | 406 | 11 | 284 | 295 | 83  | 135 | 1432 | 65.1 |
| Opponents..... |                   | 22    | 4500 |      | 544-1244 | .437 | 142-427 | .333 | 309-463 | .667  | 241      | 543 | 784 | 35.6 | 390 | -  | 285 | 254 | 90  | 161 | 1539 | 70.0 |

| TEAM STATISTICS        | ULM      | OPP      |
|------------------------|----------|----------|
| SCORING                | 1432     | 1539     |
| Points per game        | 65.1     | 70.0     |
| Scoring margin         | -4.9     | -        |
| FIELD GOALS-ATT        | 517-1207 | 544-1244 |
| Field goal pct         | .428     | .437     |
| 3 POINT FG-ATT         | 117-360  | 142-427  |
| 3-point FG pct         | .325     | .333     |
| 3-pt FG made per game  | 5.3      | 6.5      |
| FREE THROWS-ATT        | 281-446  | 309-463  |
| Free throw pct         | .630     | .667     |
| F-Throws made per game | 12.8     | 14.0     |
| REBOUNDS               | 758      | 784      |
| Rebounds per game      | 34.5     | 35.6     |
| Rebounding margin      | -1.2     | -        |
| ASSISTS                | 284      | 285      |
| Assists per game       | 12.9     | 13.0     |
| TURNOVERS              | 295      | 254      |
| Turnovers per game     | 13.4     | 11.5     |
| Turnover margin        | -1.9     | -        |
| Assist/turnover ratio  | 1.0      | 1.1      |
| STEALS                 | 135      | 161      |
| Steals per game        | 6.1      | 7.3      |
| BLOCKS                 | 83       | 90       |
| Blocks per game        | 3.8      | 4.1      |
| ATTENDANCE             | 15814    | 67182    |
| Home games-Avg/Game    | 10-1581  | 12-5598  |
| Neutral site-Avg/Game  | -        | 0-0      |

| Date       | Opponent              | Score      | Att.  |
|------------|-----------------------|------------|-------|
| 11/08/13   | at Kansas             | L 63-80    | 16300 |
| 11/18/13   | SAMFORD               | W 86-52    | 1503  |
| 11/21/13   | at Northwestern State | Wot 84-80  | 1723  |
| 12/09/13   | THOMAS                | W 84-61    | 1001  |
| 12/14/13   | at LSU                | L 54-61    | 7623  |
| 12/18/13   | at Ole Miss           | L 62-75    | 5754  |
| 12/22/13   | LOUISIANA TECH        | L 61-83    | 4107  |
| 12/27/13   | at Ohio State         | L 31-71    | 18534 |
| * 01/04/14 | ULL                   | Wo2 103-98 | 1482  |
| * 1/9/2014 | at UT Arlington       | Lot 79-83  | 1059  |
| * 01/11/14 | TEXAS STATE           | L 36-61    | 1106  |
| * 01/16/14 | at Troy               | W 75-64    | 2038  |
| * 01/18/14 | at South Alabama      | W 64-58    | 2385  |
| * 01/23/14 | WKU                   | L 51-69    | 1528  |
| * 01/25/14 | GEORGIA STATE         | L 58-66    | 1682  |
| * 01/30/14 | ARKANSAS STATE        | W 72-65    | 1186  |
| * 02-01-14 | at ULL                | L 50-66    | 4685  |
| * 2/6/14   | at Texas State        | L 57-65    | 0     |
| * 02/13/14 | UT ARLINGTON          | L 74-85    | 1161  |
| * 02/15/14 | UALR                  | W 65-49    | 1058  |
| * 02/20/14 | at Georgia State      | L 60-75    | 1809  |
| * 02/22/14 | at WKU                | L 63-72    | 5272  |

\* - Conference game



**SUN BELT**  
CONFERENCE

| Score by Periods | 1st | 2nd | OT | OT2 | Totals |
|------------------|-----|-----|----|-----|--------|
| ULM              | 660 | 725 | 29 | 18  | 1432   |
| Opponents        | 732 | 765 | 29 | 13  | 1539   |



# Warhawks Men's Basketball

University of Louisiana at Monroe



## 2013-14 ULM MEN'S BASKETBALL ULM Combined Team Statistics (as of Feb 24, 2014) Conference games

Conference Only

| RECORD:        | OVERALL | HOME | AWAY | NEUTRAL |
|----------------|---------|------|------|---------|
| ALL GAMES      | 5-9     | 3-4  | 2-5  | 0-0     |
| CONFERENCE     | 5-9     | 3-4  | 2-5  | 0-0     |
| NON-CONFERENCE | 0-0     | 0-0  | 0-0  | 0-0     |

| #              | Player          | gp-gs | min  | avg  | Total   |      | 3-Point |      | F-Throw |      | Rebounds |     |     |      |     |    |     |     |     |     |     |      |
|----------------|-----------------|-------|------|------|---------|------|---------|------|---------|------|----------|-----|-----|------|-----|----|-----|-----|-----|-----|-----|------|
|                |                 |       |      |      | fg-fga  | fg%  | 3fg-fga | 3fg% | ft-fa   | ft%  | off      | def | tot | avg  | pf  | dq | a   | to  | blk | stl | pts | avg  |
| 12             | Ongwae,Tylor    | 14-14 | 511  | 36.5 | 96-220  | .436 | 17-64   | .266 | 63-82   | .768 | 26       | 67  | 93  | 6.6  | 42  | 2  | 20  | 26  | 8   | 20  | 272 | 19.4 |
| 10             | Olatayo,Amos    | 6-3   | 175  | 29.2 | 24-62   | .387 | 9-34    | .265 | 15-27   | .556 | 8        | 22  | 30  | 5.0  | 7   | 0  | 4   | 14  | 6   | 5   | 72  | 12.0 |
| 01             | James,Jayon     | 14-13 | 451  | 32.2 | 54-109  | .495 | 1-8     | .125 | 31-61   | .508 | 10       | 75  | 85  | 6.1  | 37  | 1  | 70  | 38  | 12  | 16  | 140 | 10.0 |
| 11             | Coppola,Nick    | 14-14 | 496  | 35.4 | 35-84   | .417 | 17-37   | .459 | 17-26   | .654 | 6        | 33  | 39  | 2.8  | 35  | 1  | 42  | 29  | 0   | 8   | 104 | 7.4  |
| 00             | Williams,Marvin | 12-10 | 284  | 23.7 | 35-82   | .427 | 0-3     | .000 | 16-27   | .593 | 20       | 30  | 50  | 4.2  | 31  | 0  | 5   | 13  | 17  | 7   | 86  | 7.2  |
| 13             | Amajoyi,Chinedu | 11-10 | 212  | 19.3 | 15-40   | .375 | 12-23   | .522 | 16-23   | .696 | 6        | 28  | 34  | 3.1  | 12  | 0  | 7   | 10  | 2   | 6   | 58  | 5.3  |
| 33             | Grieves,Daniel  | 12-1  | 164  | 13.7 | 18-51   | .353 | 15-44   | .341 | 5-7     | .714 | 6        | 13  | 19  | 1.6  | 19  | 0  | 4   | 2   | 1   | 3   | 56  | 4.7  |
| 04             | McCray,RJ       | 10-0  | 172  | 17.2 | 12-34   | .353 | 5-19    | .263 | 5-9     | .556 | 2        | 7   | 9   | 0.9  | 17  | 0  | 9   | 10  | 2   | 4   | 34  | 3.4  |
| 02             | Harvey,DeMondre | 14-4  | 216  | 15.4 | 22-38   | .579 | 0-0     | .000 | 2-8     | .250 | 19       | 19  | 38  | 2.7  | 31  | 2  | 9   | 6   | 10  | 2   | 46  | 3.3  |
| 23             | Brown,Millaun   | 6-0   | 58   | 9.7  | 5-8     | .625 | 0-0     | .000 | 1-9     | .111 | 9        | 4   | 13  | 2.2  | 6   | 0  | 1   | 2   | 1   | 1   | 11  | 1.8  |
| 15             | Koszuta,Kyle    | 11-0  | 83   | 7.5  | 6-19    | .316 | 6-16    | .375 | 2-6     | .333 | 1        | 3   | 4   | 0.4  | 6   | 0  | 4   | 3   | 0   | 3   | 20  | 1.8  |
| 20             | Sims,Evan       | 5-1   | 53   | 10.6 | 4-5     | .800 | 0-0     | .000 | 0-0     | .000 | 1        | 2   | 3   | 0.6  | 9   | 1  | 1   | 1   | 1   | 1   | 8   | 1.6  |
| Team           |                 |       |      |      |         |      |         |      |         |      | 17       | 18  | 35  |      |     |    | 5   |     |     |     |     |      |
| Total.....     |                 | 14    | 2875 |      | 326-752 | .434 | 82-248  | .331 | 173-285 | .607 | 131      | 321 | 452 | 32.3 | 252 | 7  | 176 | 159 | 60  | 76  | 907 | 64.8 |
| Opponents..... |                 | 14    | 2875 |      | 343-782 | .439 | 95-273  | .348 | 195-290 | .672 | 158      | 348 | 506 | 36.1 | 247 | -  | 178 | 148 | 45  | 88  | 976 | 69.7 |

| TEAM STATISTICS        | ULM     | OPP     |
|------------------------|---------|---------|
| SCORING                | 907     | 976     |
| Points per game        | 64.8    | 69.7    |
| Scoring margin         | -4.9    | -       |
| FIELD GOALS-ATT        | 326-752 | 343-782 |
| Field goal pct         | .434    | .439    |
| 3 POINT FG-ATT         | 82-248  | 95-273  |
| 3-point FG pct         | .331    | .348    |
| 3-pt FG made per game  | 5.9     | 6.8     |
| FREE THROWS-ATT        | 173-285 | 195-290 |
| Free throw pct         | .607    | .672    |
| F-Throws made per game | 12.4    | 13.9    |
| REBOUNDS               | 452     | 506     |
| Rebounds per game      | 32.3    | 36.1    |
| Rebounding margin      | -3.9    | -       |
| ASSISTS                | 176     | 178     |
| Assists per game       | 12.6    | 12.7    |
| TURNOVERS              | 159     | 148     |
| Turnovers per game     | 11.4    | 10.6    |
| Turnover margin        | -0.8    | -       |
| Assist/turnover ratio  | 1.1     | 1.2     |
| STEALS                 | 76      | 88      |
| Steals per game        | 5.4     | 6.3     |
| BLOCKS                 | 60      | 45      |
| Blocks per game        | 4.3     | 3.2     |
| ATTENDANCE             | 9203    | 17248   |
| Home games-Avg/Game    | 7-1315  | 7-2464  |
| Neutral site-Avg/Game  | -       | 0-0     |

| Score by Periods | 1st | 2nd | OT | OT2 | Totals |
|------------------|-----|-----|----|-----|--------|
| ULM              | 400 | 470 | 19 | 18  | 907    |
| Opponents        | 449 | 491 | 23 | 13  | 976    |

| Date       | Opponent         | Score      | Att. |
|------------|------------------|------------|------|
| * 01/04/14 | ULL              | Wo2 103-98 | 1482 |
| * 1/9/2014 | at UT Arlington  | Lot 79-83  | 1059 |
| * 01/11/14 | TEXAS STATE      | L 36-61    | 1106 |
| * 01/16/14 | at Troy          | W 75-64    | 2038 |
| * 01/18/14 | at South Alabama | W 64-58    | 2385 |
| * 01/23/14 | WKU              | L 51-69    | 1528 |
| * 01/25/14 | GEORGIA STATE    | L 58-66    | 1682 |
| * 01/30/14 | ARKANSAS STATE   | W 72-65    | 1186 |
| * 02-01-14 | at ULL           | L 50-66    | 4685 |
| * 2/6/14   | at Texas State   | L 57-65    | 0    |
| * 02/13/14 | UT ARLINGTON     | L 74-85    | 1161 |
| * 02/15/14 | UALR             | W 65-49    | 1058 |
| * 02/20/14 | at Georgia State | L 60-75    | 1809 |
| * 02/22/14 | at WKU           | L 63-72    | 5272 |

\* - Conference game

### Number of ULM Double-Figure Scorers by Game

**Five Double-Figure Scorers (1-0)**  
vs. UL-L  
(Ongwae/Olatayo/James/Williams/McCray)

vs. GSU (Ongwae/James/Grieves)  
vs. UALR (Ongwae/James/McCray)  
at GSU (Coppola/Ongwae/Amajoyi)

**Four Double-Figure Scorers (6-0)**  
vs. Sam (Olatayo/James/Ongwae/Grieves)  
at NSU (Olatayo/James/Williams/Ongwae)  
vs. Thom (Ongwae/Harvey/Williams/James)  
at Troy (Ongwae/James/Coppola/Olatayo)  
at USA (Ongwae/Olatayo/Coppola/Grieves)  
vs. ASU (Ongwae/Williams/Coppola/Amajoyi)

**Two Double-Figure Scorers (0-5)**  
at Ole Miss (Olatayo/Ongwae)  
vs. WKU (Olatayo/Ongwae)  
at Texas State (James/Ongwae)  
vs. UTA (Ongwae/James/Coppola)  
at WKU (Ongwae/James)

**Three Double-Figure Scorers (1-6)**  
at No. 5 Kansas (Williams/Olatayo/Coppola)  
at LSU (Williams/Olatayo/Ongwae)  
vs. LA Tech (Ongwae/James/Olatayo)  
at UTA (Ongwae/Olatayo/James)

**One Double-Figure Scorer (0-2)**  
vs. Texas State (Ongwae)  
at UL-L (Ongwae)

**Zero Double-Figure Scorers (0-1)**  
at No. 3 Ohio State



## 0 Marvin Williams

Junior | Center | 6-8 | 245  
Memphis, Tenn. | NW Florida State College

|        | Season-High           | Career-High           |
|--------|-----------------------|-----------------------|
| Pts    | 19, at KU (11/8/13)   | 19, at KU (11/8/13)   |
| FG     | 8, two times          | 8, two times          |
| 3FG    | 1, vs. SAM (11/18/13) | 1, vs. SAM (11/18/13) |
| FT     | 4, two times          | 4, two times          |
| Ast    | 2, two times          | 2, two times          |
| Reb    | 10, at NSU (11/21/13) | 10, at NSU (11/21/13) |
| Blocks | 4, vs. UALR (2/15/14) | 4, vs. UALR (2/15/14) |
| Steals | 1, 10 times           | 1, 10 times           |
| Min    | 33, two times         | 33, two times         |

| Opponent | Date     | GS | Min | FG-FGA/Pct. | 3FG-FGA  | FT-FTA/PCT | O-D-T    | PF-FO | A | TO | Blk | Stl | Pts/Avg |
|----------|----------|----|-----|-------------|----------|------------|----------|-------|---|----|-----|-----|---------|
| Kansas   | 11/8/13  | *  | 24  | 8-13/.615   | 0-0      | 3-5/.600   | 2-4-6    | 5-1   | 0 | 2  | 0   | 0   | 19/19.0 |
| Samford  | 11/18/13 | *  | 21  | 2-6/.333    | 1-1      | 0-0/.000   | 0-3-3    | 3-0   | 1 | 1  | 1   | 0   | 5/12.0  |
| NSU      | 11/21/13 | *  | 33  | 6-12/.500   | 0-0      | 1-4/.250   | 2-8-10   | 5-1   | 1 | 1  | 1   | 0   | 13/12.3 |
| Thomas   | 12/9/13  | *  | 22  | 4-6/.667    | 0-0      | 4-6/.667   | 1-3-4    | 2-0   | 0 | 2  | 3   | 1   | 12/12.3 |
| LSU      | 12/14/13 | *  | 28  | 7-10/.700   | 0-0      | 0-1/.000   | 3-0-3    | 3-0   | 0 | 5  | 0   | 1   | 14/12.6 |
| Ole Miss | 12/18/13 | *  | 25  | 1-8/.125    | 0-0      | 0-0/.000   | 2-0-2    | 3-0   | 2 | 3  | 0   | 1   | 2/10.8  |
| La. Tech | 12/22/13 | *  | 24  | 3-7/.429    | 0-0      | 0-0/.000   | 2-2-4    | 0-0   | 0 | 3  | 0   | 1   | 6/10.1  |
| OSU      | 12/27/13 | *  | 10  | 1-3/.333    | 0-1      | 0-0/.000   | 1-1-2    | 3-0   | 0 | 0  | 0   | 0   | 2/9.1   |
| ULL      | 1/4/14   | *  | 29  | 6-14/.429   | 0-0      | 4-5/.800   | 4-1-5    | 4-0   | 1 | 0  | 2   | 1   | 16/9.9  |
| UTA      | 1/9/14   | *  | 31  | 3-5/.600    | 0-0      | 0-0/.000   | 3-5-8    | 3-0   | 2 | 3  | 1   | 1   | 8/9.5   |
| TX ST    | 1/11/14  | *  | 18  | 0-5/.000    | 0-0      | 0-0/.000   | 2-1-3    | 2-0   | 0 | 1  | 0   | 0   | 0/8.6   |
| Troy     | 1/16/14  |    |     |             |          | DNP        |          |       |   |    |     |     |         |
| USA      | 1/18/14  |    |     |             |          | DNP        |          |       |   |    |     |     |         |
| WKU      | 1/23/14  |    | 4   | 1-1/.000    | 0-0      | 0-0/.000   | 0-0-0    | 1-0   | 0 | 0  | 0   | 0   | 2/8.1   |
| GSU      | 1/25/14  | *  | 33  | 3-6/.500    | 0-0      | 1-1/.000   | 0-5-5    | 1-0   | 1 | 2  | 3   | 0   | 7/8.0   |
| ASU      | 1/30/14  | *  | 23  | 8-13/.615   | 0-0      | 0-0/.000   | 3-3-6    | 3-0   | 0 | 0  | 2   | 1   | 16/8.6  |
| ULL      | 2/1/14   | *  | 24  | 3-9/.333    | 0-1      | 2-3/.667   | 1-5-6    | 2-0   | 0 | 2  | 1   | 1   | 8/8.5   |
| TX ST    | 2/6/14   | *  | 28  | 2-5/.400    | 0-1      | 2-4/.500   | 1-2-3    | 2-0   | 0 | 3  | 1   | 1   | 6/8.4   |
| UTA      | 2/13/14  | *  | 23  | 1-6/.167    | 0-1      | 2-2/.000   | 1-0-1    | 1-0   | 1 | 0  | 2   | 0   | 4/8.1   |
| UALR     | 2/15/14  | *  | 22  | 3-5/.600    | 0-0      | 0-2/.000   | 3-1-4    | 4-0   | 0 | 1  | 4   | 0   | 6/8.0   |
| GSU      | 2/20/14  | *  | 28  | 3-7/.429    | 0-0      | 3-8/.375   | 2-3-5    | 4-0   | 0 | 1  | 0   | 1   | 9/8.1   |
| WKU      | 2/22/14  | *  | 21  | 2-6/.333    | 0-0      | 2-2/.000   | 0-4-4    | 4-0   | 0 | 0  | 1   | 1   | 6/8.0   |
| USA      |          |    |     |             |          |            |          |       |   |    |     |     |         |
| Troy     |          |    |     |             |          |            |          |       |   |    |     |     |         |
| ASU      |          |    |     |             |          |            |          |       |   |    |     |     |         |
| UALR     |          |    |     |             |          |            |          |       |   |    |     |     |         |
| Totals   |          | 17 | 471 | 67-147/.456 | 1-5/.200 | 24-43/.558 | 33-51-84 | 55-2  | 9 | 30 | 22  | 14  | 159/8.0 |



## 2 DeMondre Harvey

Sophomore | Forward | 6-7 | 210  
Minden, La. | Pearl River CC

|        | Season-High               | Career-High               |
|--------|---------------------------|---------------------------|
| Pts    | 11, vs. Thom (12/9/13)    | 11, vs. Thom (12/9/13)    |
| FG     | 4, vs. Thom (12/9/13)     | 4, vs. Thom (12/9/13)     |
| 3FG    | N/A                       | N/A                       |
| FT     | 3, vs. Thom (12/9/13)     | 3, vs. Thom (12/9/13)     |
| Ast    | 2, three times            | 2, three times            |
| Reb    | 8, at Miss (12/18/13)     | 8, at Miss (12/18/13)     |
| Blocks | 2, three times            | 2, three times            |
| Steals | 2, vs. LA Tech (12/22/13) | 2, vs. LA Tech (12/22/13) |
| Min    | 25, vs. WKU (1/23/14)     | 25, vs. WKU (1/23/14)     |

| Opponent | Date     | GS | Min | FG-FGA/Pct. | 3FG-FGA | FT-FTA/PCT | O-D-T    | PF-FO | A  | TO | Blk | Stl | Pts/Avg |
|----------|----------|----|-----|-------------|---------|------------|----------|-------|----|----|-----|-----|---------|
| Kansas   | 11/8/13  |    | 9   | 0-0/0.000   | 0-0     | 0-0/0.000  | 0-2-2    | 2-0   | 0  | 1  | 0   | 1   | 0/0.0   |
| Samford  | 11/18/13 |    | 13  | 1-2/.500    | 0-0     | 0-0/0.000  | 0-5-5    | 2-0   | 1  | 0  | 1   | 1   | 2/1.0   |
| NSU      | 11/21/13 |    | 9   | 0-0/0.000   | 0-0     | 1-2/.500   | 1-4-5    | 2-0   | 1  | 1  | 0   | 0   | 1/1.0   |
| Thomas   | 12/9/13  |    | 15  | 4-5/.800    | 0-0     | 3-5/.600   | 2-4-6    | 2-0   | 1  | 2  | 1   | 1   | 11/3.5  |
| LSU      | 12/14/13 |    | 10  | 1-1/1.000   | 0-0     | 1-2/.500   | 0-2-2    | 0-0   | 0  | 0  | 0   | 1   | 3/3.4   |
| Ole Miss | 12/18/13 |    | 14  | 1-3/.333    | 0-0     | 0-0/0.000  | 3-5-8    | 3-0   | 0  | 1  | 0   | 1   | 2/3.2   |
| La. Tech | 12/22/13 |    | 17  | 0-1/0.000   | 0-0     | 1-2/.500   | 1-2-3    | 1-0   | 2  | 0  | 0   | 2   | 1/2.9   |
| OSU      | 12/27/13 |    | 19  | 1-6/.167    | 0-0     | 0-0/0.000  | 4-2-6    | 2-0   | 0  | 1  | 0   | 0   | 2/2.8   |
| ULL      | 1/4/14   |    | 9   | 1-2/.500    | 0-0     | 0-1/0.000  | 1-2-3    | 2-0   | 0  | 1  | 0   | 0   | 2/2.7   |
| UTA      | 1/9/14   |    | 11  | 1-1/1.000   | 0-0     | 0-0/0.000  | 1-0-1    | 1-0   | 0  | 0  | 0   | 0   | 2/2.6   |
| TX ST    | 1/11/14  |    | 18  | 2-5/.400    | 0-0     | 0-0/0.000  | 1-2-3    | 1-0   | 0  | 0  | 0   | 0   | 4/2.7   |
| Troy     | 1/16/14  | *  | 24  | 2-5/.400    | 0-0     | 0-0/0.000  | 1-1-2    | 4-0   | 2  | 0  | 2   | 0   | 4/2.8   |
| USA      | 1/18/14  | *  | 21  | 3-3/1.000   | 0-0     | 2-2/1.000  | 4-3-7    | 5-1   | 1  | 1  | 2   | 0   | 8/3.2   |
| WKU      | 1/23/14  | *  | 25  | 3-5/.600    | 0-0     | 0-4/0.000  | 1-2-3    | 1-0   | 0  | 1  | 1   | 1   | 6/3.4   |
| GSU      | 1/25/14  |    | 9   | 0-0/0.000   | 0-0     | 0-0/0.000  | 0-0-0    | 2-0   | 0  | 1  | 1   | 0   | 0/3.2   |
| ASU      | 1/30/14  | *  | 3   | 1-1/1.000   | 0-0     | 0-0/0.000  | 0-0-0    | 2-0   | 0  | 0  | 0   | 0   | 2/3.1   |
| ULL      | 2/1/14   |    | 7   | 0-2/0.000   | 0-0     | 0-0/0.000  | 1-1-2    | 2-0   | 2  | 0  | 0   | 0   | 0/2.9   |
| TX ST    | 2/6/14   |    | 12  | 0-0/0.000   | 0-0     | 0-1/0.000  | 0-0-0    | 0-0   | 1  | 1  | 0   | 0   | 0/2.8   |
| UTA      | 2/13/14  |    | 19  | 2-3/.667    | 0-0     | 0-0/0.000  | 3-4-7    | 5-1   | 0  | 0  | 1   | 0   | 4/2.8   |
| UALR     | 2/15/14  |    | 15  | 2-2/1.000   | 0-0     | 0-0/0.000  | 1-0-1    | 3-0   | 0  | 1  | 1   | 0   | 4/2.9   |
| GSU      | 2/20/14  |    | 23  | 3-4/.750    | 0-0     | 0-0/0.000  | 3-3-6    | 2-0   | 2  | 0  | 0   | 1   | 6/3.0   |
| WKU      | 2/22/14  |    | 20  | 2-5/.500    | 0-0     | 0-0/0.000  | 2-1-3    | 1-0   | 1  | 0  | 2   | 0   | 4/3.1   |
| USA      |          |    |     |             |         |            |          |       |    |    |     |     |         |
| Troy     |          |    |     |             |         |            |          |       |    |    |     |     |         |
| ASU      |          |    |     |             |         |            |          |       |    |    |     |     |         |
| UALR     |          |    |     |             |         |            |          |       |    |    |     |     |         |
| Totals   |          | 4  | 322 | 30-56/.536  | 0-0     | 8-19/.421  | 30-45-75 | 45-2  | 14 | 14 | 12  | 9   | 68/3.1  |



## 1 Jayon James

Senior | Forward | 6-6 | 225  
Paterson, N.J. | Lamar State-Port Arthur

|        | Season-High           | Career-High            |
|--------|-----------------------|------------------------|
| Pts    | 18, at TXST (2/6/14)  | 26, vs. FAU (12/29/13) |
| FG     | 8, at TXST (2/6/14)   | 12, vs. FAU (12/29/13) |
| 3FG    | 1, vs. TXST (1/11/14) | 3, at UALR (12/1/12)   |
| FT     | 9, at NSU (11/21/13)  | 9, at NSU (11/21/13)   |
| Ast    | 9, at UTA (1/9/14)    | 15, at FAU (2/2/13)    |
| Reb    | 12, vs. ULL (1/4/14)  | 12, three times        |
| Blocks | 5, vs. UALR (2/15/14) | 5, vs. UALR (2/15/14)  |
| Steals | 3, three times        | 6, vs. WKU (3/8/13)    |
| Min    | 40, at TXST (2/6/14)  | 42, vs. Troy (1/26/13) |

| Opponent | Date     | GS | Min | FG-FGA/Pct. | 3FG-FGA     | FT-FTA/PCT | O-D-T      | PF-FO      | A    | TO | Blk | Stl | Pts/Avg |         |
|----------|----------|----|-----|-------------|-------------|------------|------------|------------|------|----|-----|-----|---------|---------|
| Kansas   | 11/8/13  | *  | 33  | 2-8/.250    | 0-0         | 1-3/.333   | 0-4-4      | 4-0        | 4    | 0  | 0   | 1   | 5/5.0   |         |
| Samford  | 11/18/13 | *  | 26  | 6-8/.750    | 0-1         | 2-2/1.000  | 1-8-9      | 2-0        | 4    | 2  | 1   | 2   | 14/9.5  |         |
| NSU      | 11/21/13 | *  | 37  | 4-7/.571    | 0-0         | 9-11/.818  | 1-6-7      | 2-0        | 6    | 5  | 0   | 2   | 17/12.0 |         |
| Thomas   | 12/9/13  | *  | 25  | 4-6/.667    | 0-0         | 2-4/.500   | 1-5-6      | 2-0        | 2    | 5  | 1   | 0   | 10/11.5 |         |
| LSU      | 12/14/13 | *  | 30  | 0-6/.000    | 0-0         | 2-2/1.000  | 2-5-7      | 2-0        | 3    | 0  | 1   | 1   | 2/9.6   |         |
| Ole Miss | 12/18/13 | *  | 26  | 4-11/.364   | 0-0         | 1-3/.333   | 5-6-11     | 4-0        | 5    | 1  | 0   | 3   | 9/9.5   |         |
| La. Tech | 12/22/13 | *  | 34  | 4-5/.800    | 0-0         | 6-9/.667   | 2-6-8      | 3-0        | 4    | 4  | 0   | 1   | 14/10.1 |         |
| OSU      | 12/27/13 | *  | 17  | 2-6/.333    | 0-1         | 3-3/1.000  | 0-1-1      | 1-0        | 1    | 1  | 0   | 0   | 7/9.8   |         |
| ULL      | 1/4/14   | *  | 38  | 6-7/.857    | 0-0         | 4-6/.667   | 2-10-12    | 5-1        | 5    | 3  | 0   | 2   | 16/10.4 |         |
| UTA      | 1/9/14   | *  | 34  | 7-10/.700   | 0-0         | 0-3/.000   | 3-5-8      | 4-0        | 9    | 3  | 0   | 1   | 14/10.8 |         |
| TX ST    | 1/11/14  | *  | 26  | 4-8/.500    | 1-2         | 0-6/.000   | 0-2-2      | 0-0        | 1    | 1  | 0   | 2   | 9/10.6  |         |
| Troy     | 1/16/14  | *  | 37  | 6-8/.750    | 0-0         | 1-2/.500   | 0-4-4      | 3-0        | 5    | 2  | 0   | 1   | 13/10.8 |         |
| USA      | 1/18/14  | *  | 17  | 0-2/.000    | 0-0         | 0-0/.000   | 0-4-4      | 3-0        | 5    | 0  | 0   | 0   | 0/10.0  |         |
| WKU      | 1/23/14  |    | 23  | 2-6/.333    | 0-1         | 5-6/.833   | 1-0-1      | 1-0        | 4    | 4  | 0   | 1   | 9/9.9   |         |
| GSU      | 1/25/14  | *  | 38  | 5-8/.625    | 0-1         | 1-2/.500   | 2-5-7      | 3-0        | 5    | 5  | 2   | 0   | 11/10.0 |         |
| ASU      | 1/30/14  | *  | 39  | 4-11/.364   | 0-1         | 1-4/.250   | 2-5-7      | 2-0        | 7    | 3  | 3   | 1   | 9/9.9   |         |
| ULL      | 2/1/14   | *  | 28  | 0-5/.000    | 0-0         | 0-2/.000   | 0-4-4      | 1-0        | 5    | 1  | 2   | 0   | 0/9.4   |         |
| TX ST    | 2/6/14   | *  | 40  | 8-14/.571   | 0-1         | 2-3/.667   | 0-6-6      | 4-0        | 5    | 3  | 0   | 3   | 18/9.8  |         |
| UTA      | 2/13/14  | *  | 37  | 5-11/.455   | 0-1         | 5-8/.625   | 0-6-6      | 4-0        | 6    | 3  | 0   | 2   | 15/10.1 |         |
| UALR     | 2/15/14  | *  | 37  | 3-6/.500    | 0-0         | 6-8/.750   | 0-11-11    | 2-0        | 8    | 4  | 5   | 3   | 12/10.2 |         |
| GSU      | 2/20/14  | *  | 27  | 0-3/.000    | 0-0         | 1-2/.500   | 0-6-6      | 1-0        | 2    | 4  | 0   | 0   | 1/9.8   |         |
| WKU      | 2/22/14  | *  | 30  | 4-10/.400   | 0-1         | 5-9/.556   | 0-7-7      | 4-0        | 3    | 2  | 0   | 0   | 13/9.9  |         |
| USA      |          |    |     |             |             |            |            |            |      |    |     |     |         |         |
| Troy     |          |    |     |             |             |            |            |            |      |    |     |     |         |         |
| ASU      |          |    |     |             |             |            |            |            |      |    |     |     |         |         |
| UALR     |          |    |     |             |             |            |            |            |      |    |     |     |         |         |
| Totals   |          |    | 21  | 679         | 80-166/.482 | 1-10       | 57-98/.582 | 22-116-127 | 57-1 | 99 | 54  | 15  | 24      | 218/9.9 |



## 3 Marcelis Hansberry

Senior | Guard | 6-0 | 185  
Jackson, Miss. | Provine HS

|        | Season-High | Career-High          |
|--------|-------------|----------------------|
| Pts    | N/A         | 22, at UALR (2/4/12) |
| FG     | N/A         | 7, at USA (1/17/13)  |
| 3FG    | N/A         | 3, at UALR (2/4/12)  |
| FT     | N/A         | 5, at NT (2/16/12)   |
| Ast    | N/A         | 9, at USA (2/11/12)  |
| Reb    | N/A         | 9, at NT (2/16/12)   |
| Blocks | N/A         | 1, two times         |
| Steals | N/A         | 4, at USA (1/17/13)  |
| Min    | N/A         | 37, at FAU (1/31/13) |

| Opponent | Date     | GS | Min | FG-FGA/Pct. | 3FG-FGA | FT-FTA/PCT | O-D-T | PF-FO | A | TO | Blk | Stl | Pts/Avg |
|----------|----------|----|-----|-------------|---------|------------|-------|-------|---|----|-----|-----|---------|
| Kansas   | 11/8/13  |    |     |             |         | DNP        |       |       |   |    |     |     |         |
| Samford  | 11/18/13 |    |     |             |         | DNP        |       |       |   |    |     |     |         |
| NSU      | 11/21/13 |    |     |             |         | DNP        |       |       |   |    |     |     |         |
| Thomas   | 12/9/13  |    |     |             |         | DNP        |       |       |   |    |     |     |         |
| LSU      | 12/14/13 |    |     |             |         | DNP        |       |       |   |    |     |     |         |
| Ole Miss | 12/18/13 |    |     |             |         | DNP        |       |       |   |    |     |     |         |
| La. Tech | 12/22/13 |    |     |             |         | DNP        |       |       |   |    |     |     |         |
| OSU      | 12/27/13 |    |     |             |         | DNP        |       |       |   |    |     |     |         |
| ULL      | 1/4/14   |    |     |             |         | DNP        |       |       |   |    |     |     |         |
| UTA      | 1/9/14   |    |     |             |         | DNP        |       |       |   |    |     |     |         |
| TX ST    | 1/11/14  |    |     |             |         | DNP        |       |       |   |    |     |     |         |
| Troy     | 1/16/14  |    |     |             |         | DNP        |       |       |   |    |     |     |         |
| USA      | 1/18/14  |    |     |             |         | DNP        |       |       |   |    |     |     |         |
| WKU      | 1/23/14  |    |     |             |         | DNP        |       |       |   |    |     |     |         |
| GSU      | 1/25/14  |    |     |             |         | DNP        |       |       |   |    |     |     |         |
| ASU      | 1/30/14  |    |     |             |         | DNP        |       |       |   |    |     |     |         |
| ULL      | 2/1/14   |    |     |             |         | DNP        |       |       |   |    |     |     |         |
| TX ST    | 2/6/14   |    |     |             |         | DNP        |       |       |   |    |     |     |         |
| UTA      | 2/13/14  |    |     |             |         | DNP        |       |       |   |    |     |     |         |
| UALR     | 2/15/14  |    |     |             |         | DNP        |       |       |   |    |     |     |         |
| GSU      | 2/20/14  |    |     |             |         | DNP        |       |       |   |    |     |     |         |
| WKU      | 2/22/14  |    |     |             |         | DNP        |       |       |   |    |     |     |         |
| USA      |          |    |     |             |         |            |       |       |   |    |     |     |         |
| Troy     |          |    |     |             |         |            |       |       |   |    |     |     |         |
| ASU      |          |    |     |             |         |            |       |       |   |    |     |     |         |
| UALR     |          |    |     |             |         |            |       |       |   |    |     |     |         |
| Totals   |          |    |     |             |         | ACL Injury |       |       |   |    |     |     |         |





## 4 R.J. McCray

Senior | Guard | 6-2 | 190

Arlington, Texas | Grace Prep Academy

|        |                        |                            |
|--------|------------------------|----------------------------|
|        | Season-High            | Career-High                |
| Pts    | 12, vs. UALR (2/15/14) | 17, at SLU (12/10/12)      |
| FG     | 5, vs. UALR (2/15/14)  | 5, two times               |
| 3FG    | 2, two times           | 3, vs. Troy (1/26/13)      |
| FT     | 5, vs. ULL (1/4/14)    | 6, vs. Southern (12/13/12) |
| Ast    | 5, at LSU (12/14/13)   | 7, vs. UALR (2/7/13)       |
| Reb    | 5, at LSU (12/14/13)   | 5, at LSU (12/14/13)       |
| Blocks | 1, three times         | 2, at Tennessee (11/16/11) |
| Steals | 2, three times         | 4, vs. WKU (12/29/11)      |
| Min    | 24, at UTA (1/9/14)    | 42, at SLU (12/10/12)      |

| Opponent | Date     | GS | Min       | FG-FGA/Pct. | 3FG-FGA   | FT-FTA/PCT | O-D-T   | PF-FO | A  | TO | Blk | Stl    | Pts/Avg |
|----------|----------|----|-----------|-------------|-----------|------------|---------|-------|----|----|-----|--------|---------|
| Kansas   | 11/8/13  | 9  | 1-2/500   | 0-0         | 3-4/.750  | 0-0-0      | 1-0     | 0     | 0  | 0  | 0   | 0      | 5/5.0   |
| Samford  | 11/18/13 | 14 | 1-4/250   | 0-2         | 3-3/1.000 | 0-1-1      | 0-0     | 2     | 0  | 0  | 2   | 5/5.0  |         |
| NSU      | 11/21/13 | 11 | 1-3/333   | 0-1         | 1-2/500   | 0-0-0      | 0-0     | 0     | 1  | 0  | 0   | 3/4.3  |         |
| Thomas   | 12/9/13  | 18 | 2-3/.667  | 0-0         | 0-0/0.000 | 0-1-1      | 0-0     | 4     | 2  | 0  | 1   | 4/4/3  |         |
| LSU      | 12/14/13 | 11 | 0-1/0.000 | 0-0         | 2-2/1.000 | 2-3-5      | 2-0     | 5     | 1  | 0  | 2   | 2/3.8  |         |
| Ole Miss | 12/18/13 | 9  | 1-3/333   | 0-0         | 1-1/1.000 | 0-1-1      | 1-0     | 1     | 1  | 1  | 0   | 3/3.7  |         |
| La. Tech | 12/22/13 | *  | 18        | 3-7/.429    | 1-1       | 0-0/0.000  | 0-2-2   | 1-0   | 0  | 2  | 0   | 1      | 7/4.1   |
| OSU      | 12/27/13 | 21 | 1-5/.200  | 1-1         | 0-0/0.000 | 1-2-3      | 0-0     | 0     | 1  | 0  | 1   | 3/4.0  |         |
| ULL      | 1/4/14   | 23 | 3-8/.375  | 0-2         | 5-8/.625  | 0-0-0      | 0-0     | 1     | 0  | 0  | 1   | 11/4.8 |         |
| UTA      | 1/9/14   | 24 | 1-5/.200  | 1-2         | 0-0/0.000 | 2-2-4      | 4-0     | 3     | 1  | 1  | 2   | 3/4.6  |         |
| TX ST    | 1/11/14  | 13 | 0-2/0.000 | 0-2         | 0-0/0.000 | 0-0-0      | 3-0     | 0     | 1  | 0  | 0   | 0/4.2  |         |
| Troy     | 1/16/14  |    |           |             | DNP       |            |         |       |    |    |     |        |         |
| USA      | 1/18/14  |    |           |             | DNP       |            |         |       |    |    |     |        |         |
| WKU      | 1/23/14  |    |           |             | DNP       |            |         |       |    |    |     |        |         |
| GSU      | 1/25/14  |    |           |             | DNP       |            |         |       |    |    |     |        |         |
| ASU      | 1/30/14  | 12 | 0-0/0.000 | 0-0         | 0-0/0.000 | 0-0-0      | 3-0     | 0     | 0  | 0  | 0   | 0      | 0/3.8   |
| ULL      | 2/1/14   | 11 | 1-3/333   | 0-1         | 0-0/0.000 | 0-1-1      | 0-0     | 1     | 0  | 0  | 0   | 2/3.7  |         |
| TX ST    | 2/6/14   | 17 | 0-1/0.000 | 0-1         | 0-0/0.000 | 0-1-1      | 2-0     | 1     | 1  | 0  | 0   | 0      | 0/3.4   |
| UTA      | 2/13/14  | 17 | 2-5/400   | 2-4         | 0-0/0.000 | 0-0-0      | 3-0     | 0     | 2  | 0  | 0   | 6/3.6  |         |
| UALR     | 2/15/14  | 22 | 5-6/.833  | 2-3         | 0-1/0.000 | 0-2-2      | 0-0     | 1     | 2  | 1  | 1   | 12/4.1 |         |
| GSU      | 2/20/14  | 13 | 0-3/0.000 | 0-3         | 0-0/0.000 | 0-0-0      | 0-0     | 1     | 3  | 0  | 0   | 0      | 0/3.9   |
| WKU      | 2/22/14  | 20 | 0-1/0.000 | 0-1         | 0-0/0.000 | 0-1-1      | 2-0     | 1     | 0  | 0  | 0   | 0      | 0/3.7   |
| USA      |          |    |           |             |           |            |         |       |    |    |     |        |         |
| Troy     |          |    |           |             |           |            |         |       |    |    |     |        |         |
| ASU      |          |    |           |             |           |            |         |       |    |    |     |        |         |
| UALR     |          |    |           |             |           |            |         |       |    |    |     |        |         |
| Totals   |          | 1  | 283       | 22-62/355   | 7-24/292  | 15-21/714  | 5-17-22 | 22-0  | 21 | 18 | 3   | 11     | 66/3.7  |



## 11 Nick Coppola

Freshman | Guard | 5-11 | 195

Richmond, Va. | Benedictine Prep

|        |                      |                      |
|--------|----------------------|----------------------|
|        | Season-High          | Career-High          |
| Pts    | 16, at GSU (2/20/14) | 16, at GSU (2/20/14) |
| FG     | 5, at GSU (2/20/14)  | 5, at GSU (2/20/14)  |
| 3FG    | 4, at GSU (2/20/14)  | 4, at GSU (2/20/14)  |
| FT     | 5, at KU (11/8/13)   | 5, at KU (11/8/13)   |
| Ast    | 8, at NSU (11/21/13) | 8, at NSU (11/21/13) |
| Reb    | 6, vs. WKU (1/23/14) | 6, vs. WKU (1/23/14) |
| Blocks | N/A                  | N/A                  |
| Steals | 2, two times         | 2, two times         |
| Min    | 40, seven times      | 40, seven times      |

| Opponent | Date     | GS | Min | FG-FGA/Pct. | 3FG-FGA   | FT-FTA/PCT | O-D-T   | PF-FO | A  | TO | Blk | Stl | Pts/Avg |
|----------|----------|----|-----|-------------|-----------|------------|---------|-------|----|----|-----|-----|---------|
| Kansas   | 11/8/13  | *  | 31  | 2-5/400     | 1-3       | 5-7/714    | 0-3-3   | 0-0   | 2  | 2  | 0   | 0   | 10/10.0 |
| Samford  | 11/18/13 | *  | 26  | 2-5/400     | 0-1       | 1-3/333    | 0-3-3   | 2-0   | 6  | 0  | 0   | 0   | 5/7.5   |
| NSU      | 11/21/13 | *  | 34  | 1-5/200     | 0-1       | 0-0/000    | 0-2-2   | 3-0   | 8  | 7  | 0   | 2   | 2/5.7   |
| Thomas   | 12/9/13  | *  | 22  | 2-3/667     | 1-1       | 2-2/1.000  | 0-3-3   | 0-0   | 3  | 5  | 0   | 0   | 7/6.0   |
| LSU      | 12/14/13 | *  | 29  | 0-3/000     | 0-1       | 0-0/000    | 0-2-2   | 2-0   | 4  | 2  | 0   | 0   | 0/4.8   |
| Ole Miss | 12/18/13 | *  | 31  | 3-6/500     | 0-1       | 0-0/000    | 2-3-5   | 3-0   | 5  | 3  | 0   | 0   | 6/5.0   |
| La. Tech | 12/22/13 | *  | 28  | 0-7/000     | 0-1       | 0-0/000    | 1-1-2   | 0-0   | 4  | 2  | 0   | 0   | 0/4.3   |
| OSU      | 12/27/13 | *  | 12  | 0-2/000     | 0-1       | 0-0/000    | 0-1-1   | 1-0   | 1  | 1  | 0   | 0   | 0/4.0   |
| ULL      | 1/4/14   | *  | 29  | 0-2/000     | 0-0       | 4-7/571    | 1-3-4   | 4-0   | 2  | 1  | 0   | 0   | 0/3.8   |
| UTA      | 1/9/14   | *  | 26  | 2-3/667     | 0-1       | 0-0/000    | 0-1-1   | 3-0   | 4  | 3  | 0   | 1   | 4/3.8   |
| TX ST    | 1/11/14  | *  | 27  | 1-4/250     | 1-1       | 0-2/000    | 1-2-3   | 0-0   | 2  | 1  | 0   | 2   | 3/3.7   |
| Troy     | 1/16/14  | *  | 40  | 3-7/429     | 2-2       | 2-2/1.000  | 1-2-3   | 1-0   | 3  | 2  | 0   | 1   | 10/4.3  |
| USA      | 1/18/14  | *  | 40  | 3-7/429     | 1-2       | 3-5/600    | 0-3-3   | 3-0   | 3  | 1  | 0   | 0   | 10/4.7  |
| WKU      | 1/23/14  | *  | 40  | 0-2/000     | 0-1       | 4-6/667    | 0-6-6   | 1-0   | 5  | 1  | 0   | 1   | 4/4.6   |
| GSU      | 1/25/14  | *  | 40  | 1-6/167     | 1-3       | 0-0/000    | 0-3-3   | 4-0   | 2  | 3  | 0   | 0   | 3/4.5   |
| ASU      | 1/30/14  | *  | 40  | 4-7/571     | 2-3       | 2-2/1.000  | 2-2-4   | 1-0   | 7  | 2  | 0   | 1   | 12/5.0  |
| ULL      | 2/1/14   | *  | 37  | 3-8/375     | 1-2       | 0-0/000    | 1-0-1   | 3-0   | 1  | 3  | 0   | 1   | 7/5.1   |
| TX ST    | 2/6/14   | *  | 40  | 4-7/571     | 1-3       | 0-0/000    | 0-0-0   | 5-1   | 2  | 2  | 0   | 1   | 9/5.3   |
| UTA      | 2/13/14  | *  | 40  | 4-8/500     | 3-7       | 0-0/000    | 0-2-2   | 2-0   | 3  | 4  | 0   | 1   | 11/5.6  |
| UALR     | 2/15/14  | *  | 24  | 1-4/250     | 0-2       | 0-0/000    | 0-3-3   | 3-0   | 1  | 1  | 0   | 0   | 2/5.5   |
| GSU      | 2/20/14  | *  | 34  | 5-11/455    | 4-7       | 2-2/1.000  | 0-5-5   | 2-0   | 5  | 2  | 0   | 0   | 16/6.0  |
| WKU      | 2/22/14  | *  | 39  | 4-8/500     | 1-3       | 0-0/000    | 1-4-5   | 3-0   | 2  | 3  | 0   | 0   | 9/6.1   |
| USA      |          |    |     |             |           |            |         |       |    |    |     |     |         |
| Troy     |          |    |     |             |           |            |         |       |    |    |     |     |         |
| ASU      |          |    |     |             |           |            |         |       |    |    |     |     |         |
| UALR     |          |    |     |             |           |            |         |       |    |    |     |     |         |
| Totals   |          | 22 | 709 | 45-120/375  | 19-47/404 | 25-38/658  | 9-51-60 | 46-1  | 75 | 51 | 0   | 11  | 134/6.1 |



## 10 Amos Olatayo

Senior | Guard | 6-4 | 200

Houston, Texas | Navarro College

|        |                       |                                |
|--------|-----------------------|--------------------------------|
|        | Season-High           | Career-High                    |
| Pts    | 30, at NSU (11/21/13) | 30, (previous) at FIU (2/2/13) |
| FG     | 11, at NSU (11/21/13) | 12, at FIU (2/2/13)            |
| 3FG    | 4, at UTA (1/9/14)    | 4, at UTA (1/9/14)             |
| FT     | 6, at NSU (11/21/13)  | 9, vs ULL (3/2/13)             |
| Ast    | 3, vs. THOM (12/9/13) | 4, vs. ULL (3/2/13)            |
| Reb    | 9, at NSU (11/21/13)  | 11, at ASU (1/19/13)           |
| Blocks | 5, vs. ULL (1/4/14)   | 5, vs. ULL (1/4/14)            |
| Steals | 2, three times        | 4, vs. ULL (3/2/13)            |
| Min    | 45, vs. ULL (1/4/14)  | 45, vs. ULL (1/4/14)           |

| Opponent | Date     | GS | Min | FG-FGA/Pct. | 3FG-FGA    | FT-FTA/PCT | O-D-T    | PF-FO | A  | TO | Blk | Stl | Pts/Avg  |
|----------|----------|----|-----|-------------|------------|------------|----------|-------|----|----|-----|-----|----------|
| Kansas   | 11/8/13  | *  | 33  | 5-10/.500   | 0-2        | 1-2/.500   | 1-2-3    | 3-0   | 2  | 4  | 0   | 1   | 11/11.0  |
| Samford  | 11/18/13 | *  | 25  | 10-13/.769  | 2-4        | 0-0/.000   | 2-2-4    | 1-0   | 0  | 2  | 1   | 1   | 22/16.5  |
| NSU      | 11/21/13 | *  | 37  | 11-13/.846  | 2-2        | 6-10/.600  | 2-7-9    | 4-0   | 0  | 6  | 0   | 2   | 30/21.0  |
| Thomas   | 12/9/13  | *  | 29  | 2-6/.333    | 1-4        | 2-2/1.000  | 1-4-5    | 1-0   | 3  | 1  | 0   | 0   | 7/17.5   |
| LSU      | 12/14/13 | *  | 28  | 4-13/.308   | 0-4        | 3-4/.750   | 1-7-8    | 2-0   | 0  | 1  | 1   | 1   | 11/16.2  |
| Ole Miss | 12/18/13 | *  | 26  | 7-16/.438   | 2-5        | 1-4/.250   | 4-2-6    | 0-0   | 1  | 2  | 0   | 1   | 17/16.3  |
| La. Tech | 12/22/13 | *  | 28  | 4-13/.308   | 3-6        | 0-0/.000   | 3-4-7    | 4-0   | 0  | 2  | 0   | 2   | 11/15.6  |
| OSU      | 12/27/13 | *  | 17  | 1-4/.250    | 1-2        | 1-2/.500   | 0-2-2    | 1-0   | 0  | 0  | 0   | 0   | 4/14.1   |
| ULL      | 1/4/14   | *  | 45  | 6-18/.333   | 2-9        | 2-4/.500   | 3-3-6    | 1-0   | 2  | 4  | 5   | 1   | 16/14.3  |
| UTA      | 1/9/14   | *  | 34  | 7-14/.500   | 4-9        | 2-2/1.000  | 1-7-8    | 1-0   | 0  | 2  | 0   | 1   | 20/14.9  |
| TX ST    | 1/11/14  | *  | 25  | 1-10/.100   | 0-6        | 2-3/.667   | 2-3-5    | 1-0   | 0  | 4  | 0   | 0   | 4/13.9   |
| Troy     | 1/16/14  |    | 26  | 2-4/.500    | 2-3        | 4-6/.667   | 0-4-4    | 0-0   | 2  | 1  | 0   | 0   | 10/13.6  |
| USA      | 1/18/14  |    | 23  | 4-7/.571    | 0-3        | 4-9/.444   | 0-4-4    | 2-0   | 0  | 2  | 0   | 2   | 12/13.5  |
| WKU      | 1/23/14  |    | 22  | 4-9/.444    | 1-4        | 1-3/.333   | 2-1-3    | 2-0   | 0  | 1  | 1   | 1   | 10/13.2  |
| GSU      | 1/25/14  |    |     |             |            | DNP        |          |       |    |    |     |     |          |
| ASU      | 1/30/14  |    |     |             |            | DNP        |          |       |    |    |     |     |          |
| ULL      | 2/1/14   |    |     |             |            | DNP        |          |       |    |    |     |     |          |
| TX ST    | 2/6/14   |    |     |             |            | DNP        |          |       |    |    |     |     |          |
| UTA      | 2/13/14  |    |     |             |            | DNP        |          |       |    |    |     |     |          |
| UALR     | 2/15/14  |    |     |             |            | DNP        |          |       |    |    |     |     |          |
| GSU      | 2/20/14  |    |     |             |            | DNP        |          |       |    |    |     |     |          |
| WKU      | 2/22/14  |    |     |             |            | DNP        |          |       |    |    |     |     |          |
| USA      |          |    |     |             |            |            |          |       |    |    |     |     |          |
| Troy     |          |    |     |             |            |            |          |       |    |    |     |     |          |
| ASU      |          |    |     |             |            |            |          |       |    |    |     |     |          |
| UALR     |          |    |     |             |            |            |          |       |    |    |     |     |          |
| Totals   |          | 11 | 392 | 68-150/.453 | 20-63/.317 | 29-51/.569 | 22-53-74 | 23-0  | 10 | 32 | 8   | 13  | 185/13.2 |



## 12 Tylor Ongwae

Junior | Forward | 6-7 | 205

Eldoret, Kenya | Ranger College

|        |                       |                       |
|--------|-----------------------|-----------------------|
|        | Season-High           | Career-High           |
| Pts    | 27, two times         | 27, two times         |
| FG     | 11, vs. ULL (1/4/14)  | 11, vs. ULL (1/4/14)  |
| 3FG    | 4, at UTA (1/9/14)    | 4, at UTA (1/9/14)    |
| FT     | 9, two times          | 9, two times          |
| Ast    | 4, vs. Thom (12/9/13) | 4, vs. Thom (12/9/13) |
| Reb    | 11, two times         | 11, two times         |
| Blocks | 3, vs. ULL (1/4/14)   | 3, vs. ULL (1/4/14)   |
| Steals | 5, vs. UALR (2/15/14) | 5, vs. UALR (2/15/14) |
| Min    | 46, vs. ULL (1/4/14)  | 46, vs. ULL (1/4/14)  |

| Opponent | Date     | GS   | Min        | FG-FGA/Pct.  | 3FG-FGA    | FT-FTA/PCT  | O-D-T      | PF-FO | A  | TO | Blk | Stl | Pts/Avg  |
|----------|----------|------|------------|--------------|------------|-------------|------------|-------|----|----|-----|-----|----------|
| Kansas   | 11/8/13  | * 15 | 1-4/.250   | 0-2          | 2-2/1.000  | 1-1-2       | 5-1        | 3     | 1  | 0  | 1   |     | 4/4.0    |
| Samford  | 11/18/13 | * 25 | 5-11/.455  | 0-1          | 4-5/.800   | 3-2-5       | 0-0        | 3     | 1  | 1  | 2   |     | 14/9.0   |
| NSU      | 11/21/13 | * 29 | 3-6/.500   | 1-1          | 4-6/.667   | 0-5-5       | 4-0        | 1     | 5  | 2  | 0   |     | 11/9.7   |
| Thomas   | 12/9/13  | * 28 | 6-11/.545  | 1-3          | 9-10/.900  | 3-4-7       | 0-0        | 4     | 0  | 1  | 4   |     | 22/12.8  |
| LSU      | 12/14/13 | * 26 | 4-10/.400  | 0-0          | 4-4/1.000  | 1-2-3       | 2-0        | 0     | 1  | 0  | 2   |     | 12/12.6  |
| Ole Miss | 12/18/13 | * 21 | 4-9/.444   | 2-4          | 2-2/1.000  | 0-2-2       | 2-0        | 0     | 2  | 2  | 0   |     | 12/12.5  |
| La. Tech | 12/22/13 | * 35 | 9-19/.474  | 1-4          | 1-3/.333   | 2-3-5       | 3-0        | 0     | 2  | 2  | 0   |     | 20/13.6  |
| OSU      | 12/27/13 | * 13 | 2-7/.286   | 1-2          | 0-0/0.000  | 3-2-5       | 1-0        | 0     | 0  | 0  | 0   |     | 5/12.5   |
| ULL      | 1/4/14   | * 46 | 11-21/.524 | 1-7          | 4-4/1.000  | 4-7-11      | 4-0        | 2     | 3  | 3  | 1   |     | 27/14.1  |
| UTA      | 1/9/14   | * 39 | 10-22/.455 | 4-8          | 1-3/.333   | 0-5-5       | 2-0        | 1     | 1  | 2  | 1   |     | 25/15.2  |
| TX ST    | 1/11/14  | * 29 | 5-11/.455  | 2-5          | 0-0/0.000  | 1-2-3       | 1-0        | 1     | 1  | 0  | 0   |     | 12/14.9  |
| Troy     | 1/16/14  | * 25 | 7-15/.467  | 1-2          | 7-7/1.000  | 3-2-5       | 5-1        | 0     | 2  | 0  | 0   |     | 22/15.5  |
| USA      | 1/18/14  | * 40 | 6-20/.300  | 1-3          | 6-7/.857   | 1-3-4       | 0-0        | 2     | 2  | 0  | 3   |     | 19/15.8  |
| WKU      | 1/23/14  | * 38 | 4-12/.333  | 0-3          | 3-4/.750   | 2-4-6       | 4-0        | 1     | 1  | 0  | 0   |     | 11/15.4  |
| GSU      | 1/25/14  | * 38 | 10-16/.625 | 1-7          | 6-7/.857   | 2-8-10      | 4-0        | 3     | 3  | 0  | 1   |     | 27/16.2  |
| ASU      | 1/30/14  | * 40 | 6-16/.375  | 0-2          | 5-7/.714   | 2-7-9       | 4-0        | 1     | 0  | 1  | 2   |     | 17/16.3  |
| ULL      | 2/1/14   | * 36 | 6-16/.375  | 0-2          | 4-4/1.000  | 4-7-11      | 1-0        | 1     | 2  | 0  | 1   |     | 16/16.2  |
| TX ST    | 2/6/14   | * 39 | 6-14/.429  | 0-3          | 2-6/.333   | 2-5-7       | 3-0        | 3     | 2  | 1  | 2   |     | 14/16.1  |
| UTA      | 2/13/14  | * 37 | 7-15/.467  | 1-6          | 9-11/.818  | 1-4-5       | 4-0        | 2     | 0  | 2  | 0   |     | 24/16.5  |
| UALR     | 2/15/14  | * 35 | 8-17/.471  | 2-5          | 7-11/.636  | 0-5-5       | 4-0        | 2     | 4  | 1  | 5   |     | 25/17.0  |
| GSU      | 2/20/14  | * 32 | 5-14/.357  | 1-4          | 3-4/.750   | 3-4-7       | 1-0        | 1     | 1  | 0  | 1   |     | 14/16.8  |
| WKU      | 2/22/14  | * 37 | 5-10/.500  | 3-6          | 6-7/.857   | 1-4-5       | 5-1        | 2     | 2  | 0  | 1   |     | 19/16.9  |
| USA      |          |      |            |              |            |             |            |       |    |    |     |     |          |
| Troy     |          |      |            |              |            |             |            |       |    |    |     |     |          |
| ASU      |          |      |            |              |            |             |            |       |    |    |     |     |          |
| UALR     |          |      |            |              |            |             |            |       |    |    |     |     |          |
| Totals   |          | 22   | 699        | 130-297/.438 | 23-81/.284 | 89-114/.781 | 39-88-.127 | 59-3  | 31 | 38 | 16  | 29  | 372/16.9 |



## 13 Chinedu Amajoyi

Junior | Guard | 6-3 | 195  
Rancho Cucamonga, Calif. | Kilgore College

|        | Season-High           | Career-High           |
|--------|-----------------------|-----------------------|
| Pts    | 11, at GSU (2/20/14)  | 11, at GSU (2/20/14)  |
| FG     | 3, two times          | 3, two times          |
| 3FG    | 3, two times          | 3, two times          |
| FT     | 10, vs. ASU (1/30/14) | 10, vs. ASU (1/30/14) |
| Ast    | 2, two times          | 2, two times          |
| Reb    | 7, vs. UALR (2/15/14) | 7, vs. UALR (2/15/14) |
| Blocks | 1, two times          | 1, two times          |
| Steals | 2, two times          | 2, two times          |
| Min    | 29, two times         | 29, two times         |

| Opponent      | Date     | GS        | Min        | FG-FGA/Pct.      | 3FG-FGA          | FT-FTA/PCT       | O-D-T          | PF-FO       | A        | TO        | Blk      | Stl      | Pts/Avg       |
|---------------|----------|-----------|------------|------------------|------------------|------------------|----------------|-------------|----------|-----------|----------|----------|---------------|
| Kansas        | 11/8/13  | 3         |            | 0-0/0.000        | 0-0              | 0-0/0.000        | 0-0-0          | 1-0         | 0        | 0         | 0        | 0        | 0/0.0         |
| Samford       | 11/18/13 | 6         |            | 2-3/667          | 0-1              | 2-4/500          | 2-0-2          | 0-0         | 0        | 0         | 0        | 0        | 6/3.0         |
| NSU           | 11/21/13 | 3         |            | 1-2/500          | 0-0              | 0-0/0.000        | 0-0-0          | 0-0         | 0        | 0         | 0        | 0        | 2/2.7         |
| Thomas        | 12/9/13  | 4         |            | 0-0/0.000        | 0-0              | 0-0/0.000        | 0-0-0          | 0-0         | 0        | 0         | 0        | 0        | 0/2.0         |
| LSU           | 12/14/13 |           |            |                  |                  | DNP              |                |             |          |           |          |          |               |
| Ole Miss      | 12/18/13 | 1         |            | 0-0/0.000        | 0-0              | 0-0/0.000        | 0-0-0          | 0-0         | 0        | 1         | 0        | 0        | 0/1.6         |
| La. Tech      | 12/22/13 |           |            |                  |                  | DNP              |                |             |          |           |          |          |               |
| OSU           | 12/27/13 | 14        |            | 0-2/0.000        | 0-0              | 2-2/1.000        | 1-4-5          | 0-0         | 0        | 2         | 0        | 1        | 2/1.7         |
| ULL           | 1/4/14   |           |            |                  |                  | DNP              |                |             |          |           |          |          |               |
| UTA           | 1/9/14   |           |            |                  |                  | DNP              |                |             |          |           |          |          |               |
| TX ST         | 1/11/14  |           |            | 0-0/0.000        | 0-0              | 0-0/0.000        | 0-0-0          | 0-0         | 0        | 0         | 0        | 0        | 0/1.4         |
| Troy          | 1/16/14  | *         | 29         | 2-5/400          | 1-3              | 0-0/0.000        | 2-2-4          | 1-0         | 2        | 1         | 0        | 0        | 5/1.9         |
| USA           | 1/18/14  | *         | 15         | 1-2/500          | 1-1              | 0-0/0.000        | 0-1-1          | 0-0         | 0        | 0         | 0        | 0        | 3/2.0         |
| WKU           | 1/23/14  | *         | 16         | 0-0/0.000        | 0-0              | 1-2/500          | 1-2-3          | 0-0         | 0        | 2         | 0        | 2        | 1/1.9         |
| GSU           | 1/25/14  |           |            |                  |                  | DNP              |                |             |          |           |          |          |               |
| ASU           | 1/30/14  | *         | 29         | 0-1/0.000        | 0-0              | 10-12/833        | 0-5-5          | 2-0         | 0        | 0         | 0        | 1        | 10/2.6        |
| ULL           | 2/1/14   | *         | 13         | 1-2/500          | 1-1              | 0-0/0.000        | 0-2-2          | 0-0         | 1        | 1         | 1        | 0        | 3/2.7         |
| TX ST         | 2/6/14   | *         | 18         | 3-4/750          | 3-4              | 0-0/0.000        | 0-2-2          | 1-0         | 0        | 0         | 1        | 0        | 9/3.2         |
| UTA           | 2/13/14  | *         | 21         | 2-7/286          | 1-3              | 2-2/1.000        | 0-3-3          | 0-0         | 1        | 0         | 0        | 0        | 7/3.4         |
| UALR          | 2/15/14  | *         | 28         | 1-8/125          | 1-5              | 0-0/0.000        | 2-5-7          | 4-0         | 2        | 2         | 0        | 2        | 3/3.4         |
| GSU           | 2/20/14  | *         | 19         | 3-7/429          | 3-4              | 2-3/667          | 1-4-5          | 2-0         | 0        | 1         | 0        | 0        | 11/3.9        |
| WKU           | 2/22/14  | *         | 22         | 2-4/500          | 1-2              | 1-4/250          | 0-2-2          | 2-0         | 1        | 3         | 0        | 1        | 6/4.0         |
| USA           |          |           |            |                  |                  |                  |                |             |          |           |          |          |               |
| Troy          |          |           |            |                  |                  |                  |                |             |          |           |          |          |               |
| ASU           |          |           |            |                  |                  |                  |                |             |          |           |          |          |               |
| UALR          |          |           |            |                  |                  |                  |                |             |          |           |          |          |               |
| <b>Totals</b> |          | <b>10</b> | <b>243</b> | <b>18-47/383</b> | <b>12-25/480</b> | <b>20-29/690</b> | <b>9-32-41</b> | <b>13-0</b> | <b>7</b> | <b>13</b> | <b>2</b> | <b>7</b> | <b>68/4.0</b> |



## 20 Evan Sims

Junior | Forward | 6-8 | 235  
Houston, Texas | Lamar State-Port Arthur

|        | Season-High          | Career-High          |
|--------|----------------------|----------------------|
| Pts    | 2, four times        | 2, four times        |
| FG     | 1, four times        | 1, four times        |
| 3FG    | N/A                  | N/A                  |
| FT     | 1, at KU (11/8/13)   | 1, at KU (11/8/13)   |
| Ast    | 1, two times         | 1, two times         |
| Reb    | 3, at KU (11/8/13)   | 3, at KU (11/8/13)   |
| Blocks | 1, two times         | 1, two times         |
| Steals | 1, at Troy (1/16/14) | 1, at Troy (1/16/14) |
| Min    | 18, at USA (1/18/14) | 18, at USA (1/18/14) |

| Opponent      | Date     | GS       | Min       | FG-FGA/Pct.     | 3FG-FGA    | FT-FTA/PCT     | O-D-T        | PF-FO       | A        | TO       | Blk      | Stl      | Pts/Avg      |
|---------------|----------|----------|-----------|-----------------|------------|----------------|--------------|-------------|----------|----------|----------|----------|--------------|
| Kansas        | 11/8/13  | 12       |           | 0-2/0.000       | 0-0        | 1-4/250        | 0-3-3        | 4-0         | 1        | 1        | 0        | 0        | 1/1.0        |
| Samford       | 11/18/13 | 7        |           | 0-1/0.000       | 0-0        | 0-0/0.000      | 0-1-1        | 1-0         | 0        | 1        | 0        | 0        | 0/0.5        |
| NSU           | 11/21/13 |          |           |                 |            | DNP            |              |             |          |          |          |          |              |
| Thomas        | 12/9/13  | 4        |           | 0-1/0.000       | 0-0        | 0-0/0.000      | 0-0-0        | 1-0         | 0        | 1        | 0        | 0        | 0/0.3        |
| LSU           | 12/14/13 |          |           |                 |            | DNP            |              |             |          |          |          |          |              |
| Ole Miss      | 12/18/13 |          |           |                 |            | DNP            |              |             |          |          |          |          |              |
| La. Tech      | 12/22/13 |          |           |                 |            | DNP            |              |             |          |          |          |          |              |
| OSU           | 12/27/13 | 15       |           | 0-4/0.000       | 0-1        | 0-0/0.000      | 2-0-2        | 2-0         | 0        | 2        | 1        | 0        | 0/0.3        |
| ULL           | 1/4/14   |          |           |                 |            | DNP            |              |             |          |          |          |          |              |
| UTA           | 1/9/14   |          |           |                 |            | DNP            |              |             |          |          |          |          |              |
| TX ST         | 1/11/14  |          |           |                 |            | DNP            |              |             |          |          |          |          |              |
| Troy          | 1/16/14  | 8        |           | 1-1/1.000       | 0-0        | 0-0/0.000      | 1-0-1        | 1-0         | 0        | 0        | 0        | 1        | 2/0.6        |
| USA           | 1/18/14  | 18       |           | 1-1/1.000       | 0-0        | 0-0/0.000      | 0-2-2        | 5-1         | 1        | 0        | 1        | 0        | 2/0.8        |
| WKU           | 1/23/14  | *        | 12        | 1-2/500         | 0-0        | 0-0/0.000      | 0-0-0        | 0-0         | 0        | 0        | 0        | 0        | 2/1.0        |
| GSU           | 1/25/14  |          |           |                 |            | DNP            |              |             |          |          |          |          |              |
| ASU           | 1/30/14  | 4        |           | 0-0/0.000       | 0-0        | 0-0/0.000      | 0-0-0        | 0-0         | 0        | 1        | 0        | 0        | 0/0.9        |
| ULL           | 2/1/14   | 11       |           | 1-1/1.000       | 0-0        | 0-0/0.000      | 0-0-0        | 1-0         | 0        | 0        | 0        | 0        | 2/1.0        |
| TX ST         | 2/6/14   |          |           |                 |            | DNP            |              |             |          |          |          |          |              |
| UTA           | 2/13/14  |          |           |                 |            | DNP            |              |             |          |          |          |          |              |
| UALR          | 2/15/14  |          |           |                 |            | DNP            |              |             |          |          |          |          |              |
| GSU           | 2/20/14  |          |           |                 |            | DNP            |              |             |          |          |          |          |              |
| WKU           | 2/22/14  |          |           |                 |            | DNP            |              |             |          |          |          |          |              |
| USA           |          |          |           |                 |            |                |              |             |          |          |          |          |              |
| Troy          |          |          |           |                 |            |                |              |             |          |          |          |          |              |
| ASU           |          |          |           |                 |            |                |              |             |          |          |          |          |              |
| UALR          |          |          |           |                 |            |                |              |             |          |          |          |          |              |
| <b>Totals</b> |          | <b>1</b> | <b>91</b> | <b>4-13/308</b> | <b>0-1</b> | <b>1-4/250</b> | <b>3-6-9</b> | <b>15-1</b> | <b>2</b> | <b>6</b> | <b>2</b> | <b>1</b> | <b>9/1.0</b> |



## 15 Kyle Koszuta

Sophomore | Guard | 6-2 | 190  
Niceville, Fla. | Niceville HS

|        | Season-High           | Career-High           |
|--------|-----------------------|-----------------------|
| Pts    | 9, at ULL (2/1/14)    | 15, vs. WKU (3/8/13)  |
| FG     | 3, two times          | 5, vs. WKU (3/8/13)   |
| 3FG    | 3, at ULL (2/1/14)    | 4, vs. WKU (3/8/13)   |
| FT     | 2, vs. TXST (1/11/14) | 4, vs. ASU (2/16/13)  |
| Ast    | 2, vs. TXST (1/11/14) | 6, vs. FAU (12/29/12) |
| Reb    | 2, at Miss (12/18/13) | 3, vs. WKU (3/8/13)   |
| Blocks | N/A                   | N/A                   |
| Steals | 2, two times          | 4, vs. FAU (12/29/12) |
| Min    | 21, two times         | 36, vs. WKU (3/8/13)  |

| Opponent | Date     | GS  | Min | FG-FGA/Pct. | 3FG-FGA   | FT-FTA/PCT | O-D-T | PF-FO | A | TO | Blk | Stl | Pts/Avg |
|----------|----------|-----|-----|-------------|-----------|------------|-------|-------|---|----|-----|-----|---------|
| Kansas   | 11/8/13  | 21  |     | 0-2/0.000   | 0-1       | 0-0/0.000  | 0-0-0 | 2-0   | 1 | 1  | 0   | 0   | 0/0.0   |
| Samford  | 11/18/13 | 13  |     | 0-4/0.000   | 0-3       | 0-0/0.000  | 0-0-0 | 1-0   | 1 | 1  | 0   | 1   | 0/0.0   |
| NSU      | 11/21/13 | 15  |     | 1-2/500     | 1-2       | 0-0/0.000  | 0-1-1 | 1-0   | 0 | 0  | 0   | 1   | 3/1.0   |
| Thomas   | 12/9/13  | 7   |     | 3-3/1.000   | 1-1       | 0-0/0.000  | 0-0-0 | 0-0   | 0 | 1  | 0   | 0   | 7/2.5   |
| LSU      | 12/14/13 | 12  |     | 1-5/200     | 0-3       | 0-0/0.000  | 0-0-0 | 0-0   | 0 | 2  | 0   | 2   | 2/2.4   |
| Ole Miss | 12/18/13 | 13  |     | 2-6/333     | 2-4       | 0-0/0.000  | 0-2-2 | 1-0   | 0 | 0  | 0   | 0   | 6/3.0   |
| La. Tech | 12/22/13 | 5   |     | 1-1/1.000   | 0-0       | 0-0/0.000  | 0-0-0 | 1-0   | 0 | 0  | 0   | 2   | 2/2.9   |
| OSU      | 12/27/13 | 21  |     | 0-4/0.000   | 0-4       | 0-0/0.000  | 1-0-1 | 1-0   | 1 | 0  | 0   | 0   | 0/2.5   |
| ULL      | 1/4/14   | 13  |     | 2-3/667     | 2-2       | 0-2/0.000  | 0-1-1 | 1-0   | 1 | 0  | 0   | 1   | 6/2.9   |
| UTA      | 1/9/14   | 12  |     | 1-3/333     | 1-3       | 0-0/0.000  | 0-1-1 | 1-0   | 0 | 1  | 0   | 0   | 3/2.9   |
| TX ST    | 1/11/14  | 15  |     | 0-3/0.000   | 0-2       | 2-3/667    | 0-0-0 | 1-0   | 2 | 0  | 0   | 1   | 2/2.8   |
| Troy     | 1/16/14  |     |     |             |           | DNP        |       |       |   |    |     |     |         |
| USA      | 1/18/14  | 2   |     | 0-0/0.000   | 0-0       | 0-0/0.000  | 0-0-0 | 0-0   | 0 | 0  | 0   | 0   | 0/2.6   |
| WKU      | 1/23/14  | 4   |     | 0-1/0.000   | 0-1       | 0-1/0.000  | 0-0-0 | 0-0   | 0 | 0  | 0   | 0   | 0/2.4   |
| GSU      | 1/25/14  | 7   |     | 0-1/0.000   | 0-1       | 0-0/0.000  | 1-1-2 | 0-0   | 0 | 1  | 0   | 0   | 0/2.2   |
| ASU      | 1/30/14  |     |     |             |           | DNP        |       |       |   |    |     |     |         |
| ULL      | 2/1/14   | 19  |     | 3-7/429     | 3-6       | 0-0/0.000  | 0-0-0 | 2-0   | 1 | 0  | 0   | 1   | 9/2.7   |
| TX ST    | 2/6/14   | 2   |     | 0-0/0.000   | 0-0       | 0-0/0.000  | 0-0-0 | 0-0   | 0 | 1  | 0   | 0   | 2/2.5   |
| UTA      | 2/13/14  |     |     |             |           | DNP        |       |       |   |    |     |     |         |
| UALR     | 2/15/14  | 2   |     | 0-1/0.000   | 0-1       | 0-0/0.000  | 0-0-0 | 0-0   | 0 | 0  | 0   | 0   | 0/2.4   |
| GSU      | 2/20/14  | 6   |     | 0-1/0.000   | 0-1       | 0-0/0.000  | 0-0-0 | 0-0   | 0 | 0  | 0   | 0   | 0/2.2   |
| WKU      | 2/22/14  | 1   |     | 0-0/0.000   | 0-0       | 0-0/0.000  | 0-0-0 | 1-0   | 0 | 0  | 0   | 0   | 0/2.1   |
| USA      |          |     |     |             |           |            |       |       |   |    |     |     |         |
| Troy     |          |     |     |             |           |            |       |       |   |    |     |     |         |
| ASU      |          |     |     |             |           |            |       |       |   |    |     |     |         |
| UALR     |          |     |     |             |           |            |       |       |   |    |     |     |         |
| Totals   |          | 190 |     | 14-46/304   | 10-35/286 | 2-6/333    | 2-6-8 | 13-0  | 7 | 8  | 0   | 7   | 42/2.1  |



## 22 Lance Richard

Freshman | Guard | 5-10 | 170  
Monroe, La. | Sterlington HS

|        | Season-High | Career-High |
|--------|-------------|-------------|
| Pts    | N/A         | N/A         |
| FG     | N/A         | N/A         |
| 3FG    | N/A         | N/A         |
| FT     | N/A         | N/A         |
| Asst   | N/A         | N/A         |
| Reb    | N/A         | N/A         |
| Blocks | N/A         | N/A         |
| Steals | N/A         | N/A         |
| Min    | N/A         | N/A         |

| Opponent | Date     | GS | Min | FG-FGA/Pct. | 3FG-FGA | FT-FTA/PCT  | O-D-T | PF-FO | A | TO | Blk | Stl | Pts/Avg |
|----------|----------|----|-----|-------------|---------|-------------|-------|-------|---|----|-----|-----|---------|
| Kansas   | 11/8/13  |    |     |             |         | DNP         |       |       |   |    |     |     |         |
| Samford  | 11/18/13 |    |     |             |         | DNP         |       |       |   |    |     |     |         |
| NSU      | 11/21/13 |    |     |             |         | DNP         |       |       |   |    |     |     |         |
| Thomas   | 12/9/13  |    |     |             |         | DNP         |       |       |   |    |     |     |         |
| LSU      | 12/14/13 |    |     |             |         | DNP         |       |       |   |    |     |     |         |
| Ole Miss | 12/18/13 |    |     |             |         | DNP         |       |       |   |    |     |     |         |
| La. Tech | 12/22/13 |    |     |             |         | DNP         |       |       |   |    |     |     |         |
| OSU      | 12/27/13 |    |     |             |         | DNP         |       |       |   |    |     |     |         |
| ULL      | 1/4/14   |    |     |             |         | DNP         |       |       |   |    |     |     |         |
| UTA      | 1/9/14   |    |     |             |         | DNP         |       |       |   |    |     |     |         |
| TX ST    | 1/11/14  |    |     |             |         | DNP         |       |       |   |    |     |     |         |
| Troy     | 1/16/14  |    |     |             |         | DNP         |       |       |   |    |     |     |         |
| USA      | 1/18/14  |    |     |             |         | DNP         |       |       |   |    |     |     |         |
| WKU      | 1/23/14  |    |     |             |         | DNP         |       |       |   |    |     |     |         |
| GSU      | 1/25/14  |    |     |             |         | DNP         |       |       |   |    |     |     |         |
| ASU      | 1/30/14  |    |     |             |         | DNP         |       |       |   |    |     |     |         |
| ULL      | 2/1/14   |    |     |             |         | DNP         |       |       |   |    |     |     |         |
| TX ST    | 2/6/14   |    |     |             |         | DNP         |       |       |   |    |     |     |         |
| UTA      | 2/13/14  |    |     |             |         | DNP         |       |       |   |    |     |     |         |
| UALR     | 2/15/14  |    |     |             |         | DNP         |       |       |   |    |     |     |         |
| GSU      | 2/20/14  |    |     |             |         | DNP         |       |       |   |    |     |     |         |
| WKU      | 2/22/14  |    |     |             |         | DNP         |       |       |   |    |     |     |         |
| USA      |          |    |     |             |         |             |       |       |   |    |     |     |         |
| Troy     |          |    |     |             |         |             |       |       |   |    |     |     |         |
| ASU      |          |    |     |             |         |             |       |       |   |    |     |     |         |
| UALR     |          |    |     |             |         |             |       |       |   |    |     |     |         |
| Totals   |          |    |     |             |         | Redshirting |       |       |   |    |     |     |         |



|        | Season-High           | Career-High           |
|--------|-----------------------|-----------------------|
| Pts    | 5, vs. ULL (1/4/14)   | 21, vs. NT (2/14/13)  |
| FG     | 2, vs. ULL (1/4/14)   | 9, vs. NT (2/14/13)   |
| 3FG    | N/A                   | N/A                   |
| FT     | 2, at KU (11/8/13)    | 3, at NT (2/14/13)    |
| Ast    | 1, vs. TXST (1/11/14) | 4, vs. WKU (3/8/13)   |
| Reb    | 8, vs. ULL (1/4/14)   | 12, vs. WKU (2/21/13) |
| Blocks | 1, two times          | 2, at FIU (2/2/13)    |
| Steals | 1, three times        | 3, vs. LTU (11/24/12) |
| Min    | 18, two times         | 36, at ASU (1/19/13)  |



|        | Season-High          | Career-High          |
|--------|----------------------|----------------------|
| Pts    | 2, at OSU (12/27/13) | 2, at OSU (12/27/13) |
| FG     | N/A                  | N/A                  |
| 3FG    | N/A                  | N/A                  |
| FT     | 2, at OSU (12/27/13) | 2, at OSU (12/27/13) |
| Ast    | N/A                  | N/A                  |
| Reb    | 2, at OSU (12/27/13) | 2, at OSU (12/27/13) |
| Blocks | N/A                  | N/A                  |
| Steals | N/A                  | N/A                  |
| Min    | 5, at OSU (12/27/13) | 5, at OSU (12/27/13) |



|        | Season-High            | Career-High            |
|--------|------------------------|------------------------|
| Pts    | 13, vs. SAM (11/18/13) | 13, vs. SAM (11/18/13) |
| FG     | 5, vs. SAM (11/18/13)  | 5, vs. SAM (11/18/13)  |
| 3FG    | 3, two times           | 3, two times           |
| FT     | 2, at USA (1/18/14)    | 2, at USA (1/18/14)    |
| Ast    | 1, seven times         | 1, seven times         |
| Reb    | 4, at USA (1/18/14)    | 4, at USA (1/18/14)    |
| Blocks | N/A                    | N/A                    |
| Steals | 1, five times          | 1, five times          |
| Min    | 35, vs. GSU (1/25/14)  | 35, vs. GSU (1/25/14)  |



|        | Season-High          | Career-High           |
|--------|----------------------|-----------------------|
| Pts    | N/A                  | N/A                   |
| FG     | N/A                  | N/A                   |
| 3FG    | N/A                  | N/A                   |
| FT     | N/A                  | N/A                   |
| Asst   | N/A                  | N/A                   |
| Reb    | N/A                  | 1, vs. LTU (11/24/12) |
| Blocks | N/A                  | N/A                   |
| Steals | N/A                  | N/A                   |
| Min    | 2, at OSU (12/27/13) | 2, at OSU (12/27/13)  |





# Warhawks Men's Basketball

University of Louisiana at Monroe



## Media Roster



### **0 Marvin Williams**

Junior | Center | 6-8 | 245  
Memphis, Tenn.  
NW Florida State College  
8.0 ppg, 4.2 rpg, .456 FG%



### **13 Chinedu Amajoyi**

Junior | Guard | 6-3 | 195  
Rancho Cucamonga, Calif.  
Kilgore College  
4.0 ppg, .383 FG%, .480 3FG%



### **1 Jayon James**

Senior | Forward | 6-6 | 225  
Paterson, N.J.  
Lamar State-Port Arthur  
9.9 ppg, 6.3 rpg, 4.5 apg



### **15 Kyle Koszuta**

Sophomore | Guard | 6-2 | 190  
Niceville, Fla.  
Niceville HS  
2.1 ppg, .304 FG%, .286 3FG%



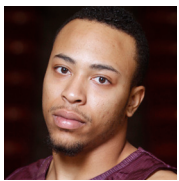
### **2 DeMondre Harvey**

Sophomore | Forward | 6-7 | 210  
Minden, La.  
Pearl River CC  
3.1 ppg, 3.4 rpg, .536 FG%



### **20 Evan Sims**

Junior | Forward | 6-8 | 235  
Houston, Texas  
Lamar State-Port Arthur  
1.0 ppg, 1.0 rpg, .308 FG%



### **3 Marcellis Hansberry**

Senior | Guard | 6-0 | 185  
Jackson, Miss.  
Provine HS  
ACL Injury



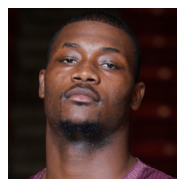
### **22 Lance Richard**

Freshman | Guard | 5-10 | 170  
Monroe, La.  
Sterlington HS  
Redshirting



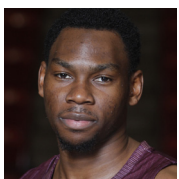
### **4 R.J. McCray**

Senior | Guard | 6-2 | 190  
Arlington, Texas  
Grace Prep Academy  
3.7 ppg, .355 FG%, .292 3FG%



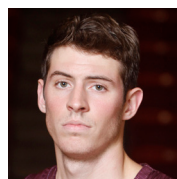
### **23 Millann Brown**

Senior | Forward | 6-7 | 230  
Gunnison, Miss.  
East Mississippi CC  
1.6 ppg, 2.2 rpg, .474 FG%



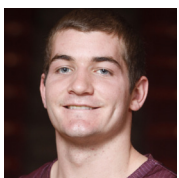
### **10 Amos Olatayo**

Senior | Guard | 6-4 | 200  
Houston, Texas  
Navarro College  
13.2 ppg, 5.3 rpg, .453 FG%



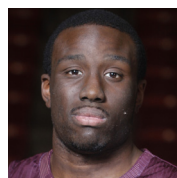
### **33 Daniel Grieves**

Sophomore | Guard | 6-6 | 210  
Bay St. Louis, Miss.  
Pearl River CC  
4.5 ppg, .357 FG%, .348 3FG%



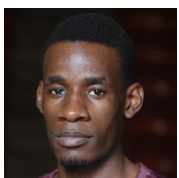
### **11 Nick Coppola**

Freshman | Guard | 5-11 | 195  
Richmond, Va.  
Benedictine Prep  
6.1 ppg, 3.4 apg, .404 3FG%



### **34 Leon Carswell JJ**

Junior | Forward | 6-3 | 225  
Bossier City, La.  
Hannibal-LaGrange University  
2.0 ppg, 2.0 rpg, (one appearance)



### **12 Tylor Ongwae**

Junior | Forward | 6-7 | 205  
Eldoret, Kenya  
Ranger College  
16.9 ppg, 5.8 rpg, .438 FG%



### **35 Colten Ponder**

Sophomore | Forward | 6-5 | 215  
Shreveport, La.  
Calvary Baptist Academy  
2 mins (one appearance)